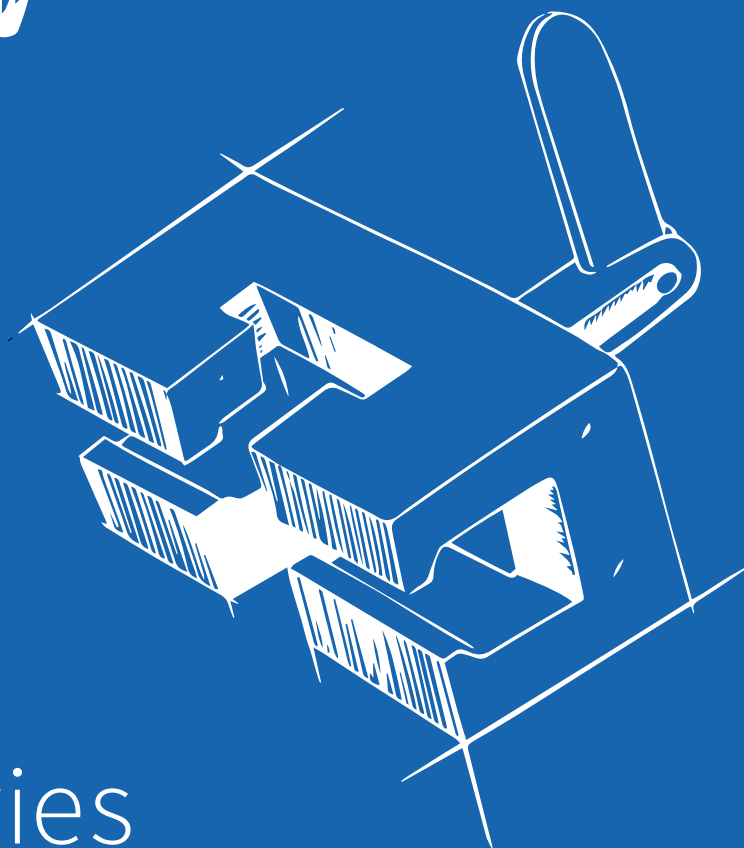
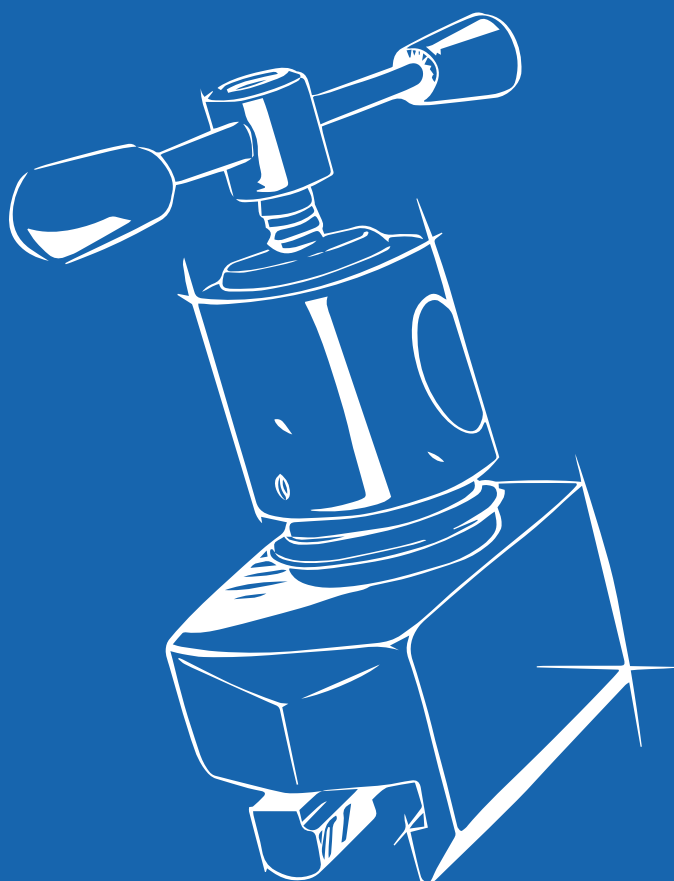
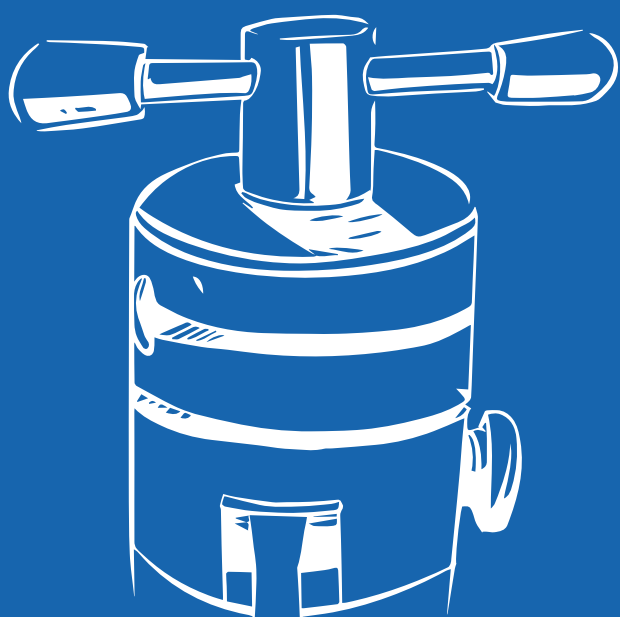




SurgiSystems



Accessories



INDEX

SURGICAL SPECIALTIES

ANAESTHESIA 3 – 10

GENERAL SURGERY 11 – 20

GYNAECOLOGY – UROLOGY – PROCTOLOGY 21 – 26

VASCULAR 27 – 30

ORTHOPAEDICS – TRAUMATOLOGY 31 – 48

ENT – NEUROSURGERY 49 – 56

GEL PADS 57 – 60

INDEX 61 – 67

COMPANY WITH
QUALITY SYSTEM
CERTIFIED BY DNV
ISO 9001

COMPANY WITH
QUALITY SYSTEM
CERTIFIED BY DNV
ISO 13485

COMPANY WITH
ENVIRONMENTAL SYSTEM
CERTIFIED BY DNV
ISO 14001





ANAESTHESIA



ANAESTHESIA SCREEN

9903001 For OPT 30/1 - 40/1

9903007 For VANTO/VANTO II - ASSO - VITA

Height adjustable, tiltable, with 2 lateral extension bars, with security system. Complete with clamps.



L-SHAPED ANAESTHESIA SCREEN

9903003

Height adjustable, tiltable, with rubber patient protection and security ring, complete with 2 lateral extension bar.

To be used with clamp to be ordered separately (advised code 9901023).



FLEXIBLE SCREEN

9903009

With frame adjustable from 1.400 to 1.900 mm.

To be used with n. 2 clamps to be ordered separately (advised code 9901023).



SUSPENDED ARM STRAP

9906801

Made of washable tissue, having 100 mm width to be attached to anaesthesia screen for the suspension of patient's arm.

Advised quantity: 2 pieces.

BODY/LEG STRAP

9914001 Standard - Width 60 mm

9914008 For bariatrics - Width 150 mm

Padded and washable belt, length adjustable, with security and breaking system. Complete with clamps.



BODY/LEG STRAP

9914009 For OPT 30/1 - 40/1 - ASSO - VANTO/VANTO II - VITA

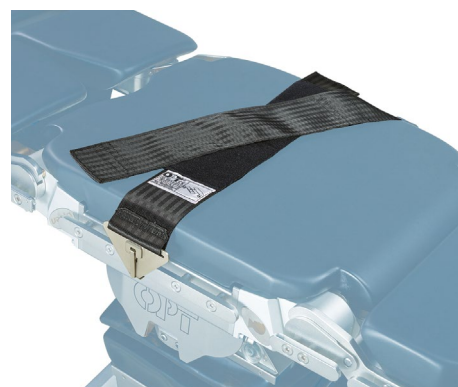
Width 100 mm and washable, with clips for attaching onto the side rails adjustable in its length. With anti fall system.



BODY / LEG STRAP WITH VELCRO CLOSURE

9914012 For OPT - 30/1 - 40/1 - ASSO - VANTO/VANTO II - VITA

With clips for attaching onto the side rails with locking system, detachable in two section. Washable, width 100 mm.

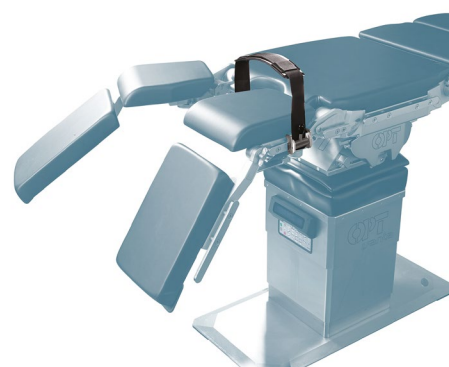


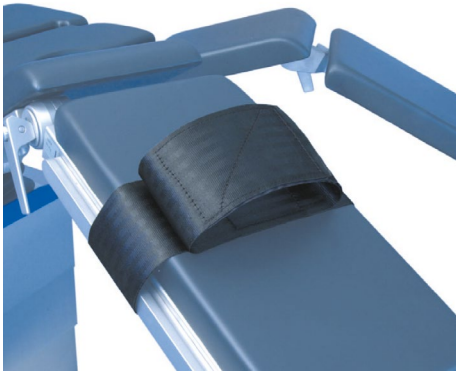
SINGLE LEG STRAP

9914005

Advised for laparoscopic surgery. Washable, with velcro closure. Suitable for divided leg section. Complete with clip for attaching onto side rail.

Advised quantity: 2 pieces.



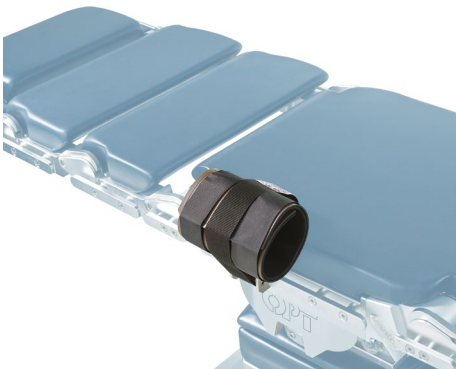


SINGLE LEG STRAP

9914011

Washable, with velcro closure. Suitable for divided leg section.

Advised quantity: 2 pieces.



LEATHER WRISTLET

9915001 Standard

9915003 Paediatric

9915005 For bariatrics

Washable, with velcro closure, padded and complete with clamp.

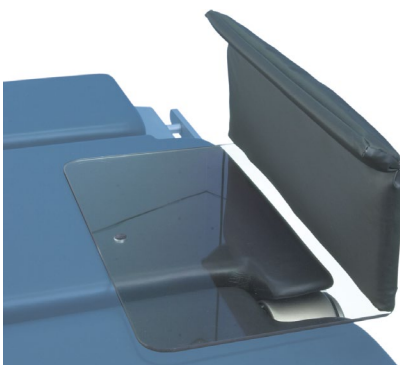


WRIST SUPPORT

9915002 Standard

9915002P With viscoelastic pad

Complete with fast-frontal locking clamp to be placed onto side rail to keep the arm parallel to the body. Made of washable cotton, with velcro closure, length: 100 mm.



ARM PROTECTOR

9915004 Adults- Length 400 mm and height 130 mm

9915006 Paediatric - Length 300 mm and height 100 mm

Acrylic material plate, easy to install, used for placement/protection of patient's arm, which is protected safely and in an anatomically correct way.

INFUSION ROD

9916002

Swivelling, height adjustable from 800mm to 1500mm, complete with 4 metal hooks and a clamp.



PAEDIATRIC ARM SUPPORT

9906012 Paediatric - Dimensions: 260 x 100 mm

Complete with clamp for frontal and fast locking, with a soft cushion, and two fixation belts.



ARM SUPPORT – ON BALL JOINT

9906013 Dimensions: 500 x 140 mm

9906019 For bariatrics - Dimensions: 500 x 248 mm

Height adjustable for 150 mm, complete with frontal fast locking clamp, soft cushion, and two fixation belts.



ARM SUPPORT FOR ADULTS ON BALL JOINT

9906021 Standard for OPT - 30/1 - 40/1 - ASSO - VANTO/VANTO II - VITA

9906021P For ASSO - VANTO/VANTO II - VITA with viscoelastic cushions

Complete with frontal fast locking clamp, soft cushion and two fixation belts. Dimensions: 510 x 140 mm.





ARM SUPPORT - LONGITUDINALLY AND HEIGHT ADJUSTABLE

9906026

Complete with clamp for frontal and fast locking, a soft cushion with dimensions 510 mm x 140 mm, and two fixation belts. Height adjustable for 290 mm and longitudinally adjustable for 300 mm.



ARM SUPPORT ON BALL JOINT WITH LEVER

9906030 For OPT 30/1 - 40/1 - ASSO - VANTO/VANTO II - VITA

Can be swivelled via ball-and-socket joint by a lever system with one hand. Height adjustable, complete with cushion with dimension 510 mm x 140 mm, two fixation belts and frontal fast locking clamp.



ARM SUPPORT ON BALL JOINT

9906032 For OPT 30/1 - 40/1 - ASSO - VANTO/VANTO II - VITA

Complete with an adjustment system with ball-and-socket joint to fix the support on all positions. It is height adjustable with a run of 100 mm, complete with cushion 510x140 mm and thickness 40 mm, two fixation belts and frontal fast locking clamp.



TRIPLE-JOINT ARMREST WITH ONLY ONE FIXING KNOB

9906036 Without vertical movement

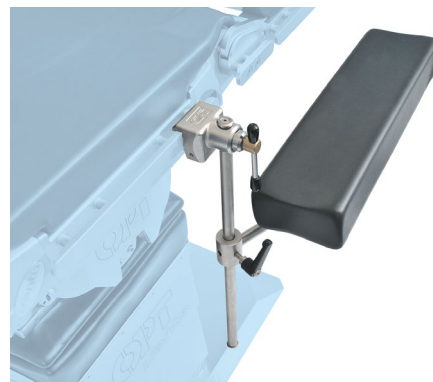
9906035 With vertical movement: ± 165 mm

Equipped with three joints that can be fixed using a single knob. This facilitates fixing the patient's arm in all the desired positions (including lateral decubitus) in a quick and precise way. Complete with clamp, soft mattress and fixing strap.

ARM SUPPORT FOR PARK BENCH POSITION WITH FAST LOCKING CLAMP

9906029 - Dimensions: 510 x 140 mm

For patient in park bench position, height adjustable for 459 mm. Complete with frontal fast locking clamp, soft cushion and a fixation belt.



ARM SUPPORT FOR PATIENT IN LATERAL DECUBITUS

9906003

Swivelling via ball-and-socket joint, height adjustable for 600 mm. Complete with soft cushion with dimensions 400 mm x 150 mm and belts.

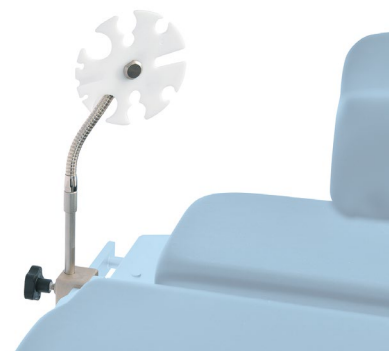
To be used with clamp to be ordered separately (advised code 9901023)



FLEXIBLE SUPPORT FOR ANAESTHESIA TUBES

9907067

Flexible, with adjustable-height rod and complete with clamp.



RAILING LATERAL EDGE (SINGLE) FOR THE TABLE TOP

9928003

Made of stainless steel, can be tilted. Dimension 720 mm x 280 mm. Complete with fast locking clamp.





VACUUM MATTRESS

C3103786 Dimensions 2000 x 1000 mm

C3103806 Dimensions 750 X 1000 mm

C3103813 Dimensions 1000 X 1000 mm

Vacuum cushion to immobilise patients on operating tables, even with polytrauma.



LIFT PUMP FOR VACUUM MATTRESS

C3103859

With hand-foot pumping system. To be used with Vacuum mattress codes C3103786 - C3103806 - C3103813. From 55 cm.



HEATING MATTRES

C3103848 DimensionS 1800x700 mm

Heating mattress to heat the patient inside the operating room. The device is composed of a heating mattress, a power supply and a gel mattress.



SINGLE COVER FOR HEATING MATTRESS

C3103849 Dimensions 2400 x 1000 mm

Disposable cover for the heating mattress code C3103848. Each pack contains 40 pieces.



GENERAL SURGERY



REMOTE CONTROL HOLDER

9901007 For OPT 30/1-40/1

Useful for attaching the remote control to the side rails.



FIXED CLAMP WITH FAST LOCKING ATTACHMENT

9901024

It can fit side rails of size 25 x 10 mm and rods of 16 and 18 mm diameter. Both fixation of the accessory and clamp fixation onto the side rail are simultaneously managed by means of a single knob.



CLAMP WITH RADIAL SETTING AND FAST LOCKING ATTACHMENT

9901023

It can fit side rails of size 25 x 10 mm and rods of 16 and 18 mm diameter. Both fixation of the accessory and clamp fixation onto the side rail are simultaneously managed by means of a single knob. 360° rotation of the accessory is allowed.



QUICK RELEASE CLAMP

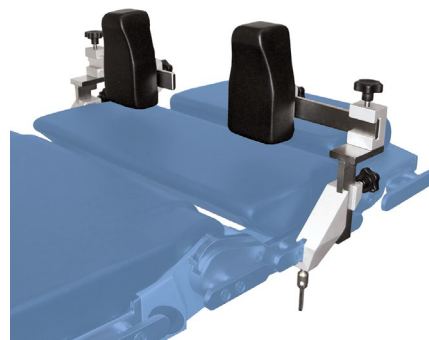
9901022

For side rails of size 25x10 mm. It can fit 16 mm diameter rods. With frontal fast locking attachment and extension for vertical bar.

PAIR OF ADJUSTABLE SHOULDER SUPPORTS

9904003

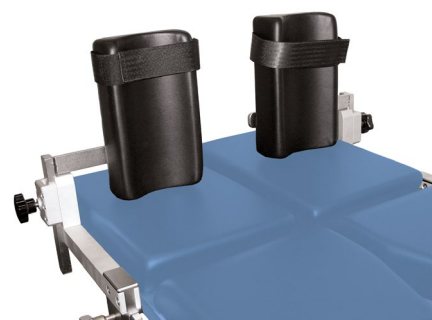
Complete with antistatic cushions and clamps. Height and width adjustable ± 160 mm.



PAIR OF ADJUSTABLE FEET SUPPORTS

9909008

Complete with antistatic cushions and clamps. Height and width adjustable ± 110 mm.



UNIVERSAL LATERAL SUPPORT

9908009

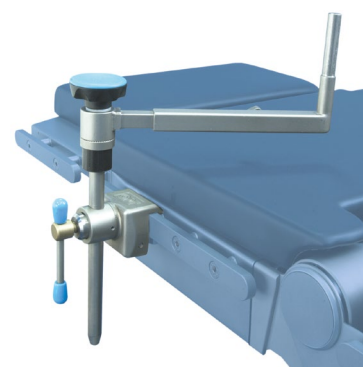
Made of stainless steel, it can be used as universal fixture for body supports. Height adjustable ± 150 mm, complete with clamp.



UNIVERSAL LATERAL SUPPORT

9908022

Made of stainless steel, swivelling, length (± 110 mm) and height (± 175 mm) adjustable with radial toothed locking system. Complete with radial setting clamp with frontal fast locking attachment.

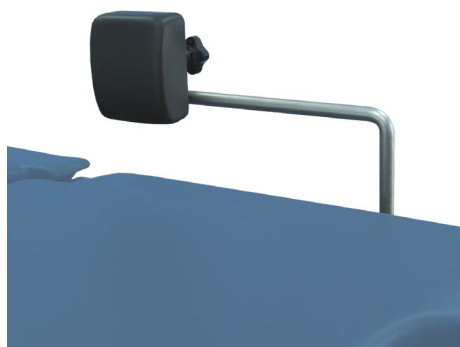




TRIPLE-JOINT LATERAL SUPPORT

9908033

Universal lateral support, which thanks to its 3 joints and a single unlocking lever allows to place the lateral support in any position. Supplied complete with clamp.



STERNAL - BACK SUPPORT

9908001

Cushion (size 120 x 100 mm) complete with locking for universal support. **To be used with universal lateral support 9908009-9908022 to be ordered separately.**



BACK BUTTOCKS SUPPORT

9908002 Dimensions: 200 x 80 mm

9908026 Dimensions: 280 x 140 mm

Cushion complete with locking for universal support. It can be mounted either horizontally or vertically.

To be used with universal lateral support 9908009-9908022 to be ordered separately.



BUTTERFLY-SHAPED CHEST SUPPORT

9908003

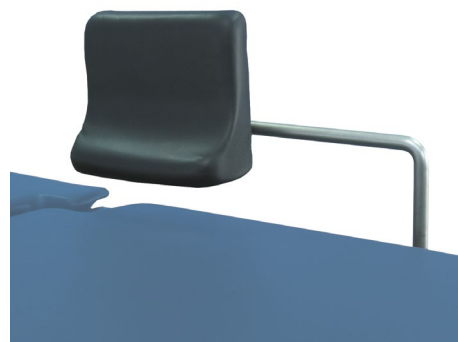
Cushion (size mm 270 x 100), complete with locking for universal support.

To be used with universal lateral support 9908009-9908022 to be ordered separately.

CHEST SUPPORT

9908004

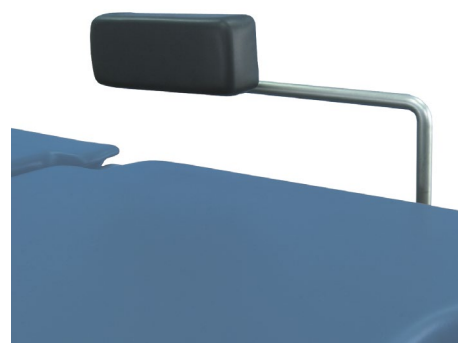
Cushion (size 170 x 200 mm), complete with locking for universal support.
To be used with universal lateral support 9908009-9908022 to be ordered separately.



SACRAL SUPPORT

9908005

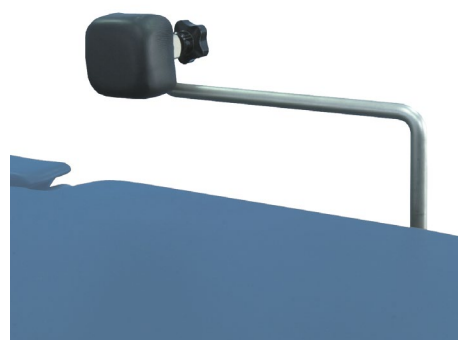
Cushion (size 200 x 80 mm), complete with antistatic cushion. It can be mounted either horizontally or vertically.
To be used with universal lateral support 9908009-9908022 to be ordered separately.



PUBIS SUPPORT

9908006

Cushion (size 50 x 50 mm), complete with locking for universal support.
To be used with universal lateral support 9908009-9908022 to be ordered separately.



CYLINDRICAL LATERAL SUPPORT

9908020

Cushion (height: 300 mm, diameter: 80 mm), complete with locking for universal support.
To be used with universal lateral support 9908009-9908022 to be ordered separately.

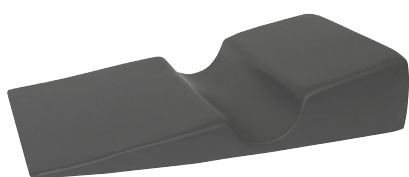




FLAT SIZE BODY SUPPORT

- 9908021** For operating tables with standard cushions
9908021P For operating tables with viscoelastic cushions

Body support complete with flat cushion (200 x 80 mm), arm support and clamp.



WEDGE-SHAPED PAD

9921016

Special cushion for a comfortable patient positioning in lateral decubitus. Dimensions 900 x 480 x 200 mm.



SEMICIRCULAR CUSHION

9921018

Special cushion for a comfortable semisitted/sitted and prone patient positioning. Dimensions 470 x 200 x 110 mm.



TUNNEL CUSHION

9921015

Special cushion for patient leg protection in the position of lateral decubitus. Dimensions 650 x 480/380 x 220/150 mm.

SINGLE LEG SUPPORT

9913002

Swivelling arch, complete with antistatic cushion. To position the patient's leg during surgical disinfection.

To be used with clamp (advised code 9901023) to be ordered separately.



INSTRUMENT TRAY

9910002

Height adjustable, dimensions 470 x 370 mm.

To be used with clamp to be ordered separately (advised code 9901023).



ARCH-SHAPED DEVICE FOR COSTAL EDGE TRACTION

9907020 For OPT 30/1 - 40/1

9907059 For VANTO/VANTO II - ASSO - VITA

With swivelling vertical bars, height adjustable for 335 mm thanks to clamps (included). Complete with 2 lateral extension bars (230 mm) and with 4 hooks.



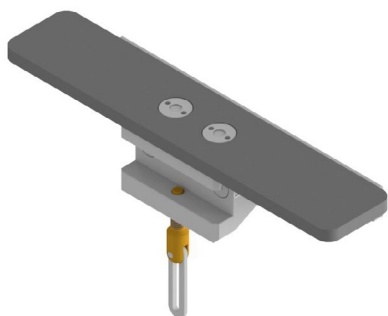
TRIPLE-JOINT ENDOSCOPE HOLDER

R0701384030

The triple-joint through a single knob allows to lock the endoscope in all the desired positions quickly and precisely.

To be used with clamp to be ordered separately (advised code 9901023).



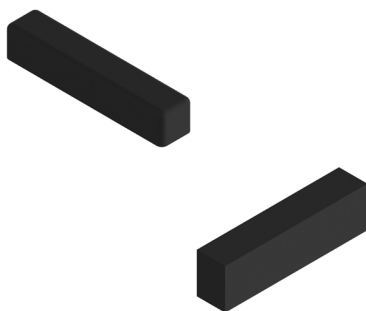


9906023 For OPT 30/1 - 40/1 - ASSO - VANTO/VANTO II - VITA
Dimensions 300 x 81 mm

It is used to increase the surface area of the operating tabletop. It comes complete with clamp.

Advised quantity: 2 pieces.

To be completed with suitable cushions to be chosen between: 9906023SA - 9906023VA



CUSHIONS FOR WIDTH EXTENSION FLAT SHAPE (SINGLE)

9906023SA for tabletops having FOAMED CUSHIONS
9906023VA for tabletops having PUR or VISCOELASTIC CUSHIONS

Suitable for completing the width extension flat shape (single) code 9906023



CURVED WIDTH EXTENSION (SINGLE)

9906022M For OPT 30/1 - 40/1 - ASSO - VANTO/VANTO II - VITA
Dimensions 200 x 200 mm

It is used for ergonomic patient support. Complete with clamp and antistatic cushion. It can be matched with code 9960023M or it can be used singularly.

Advised quantity: 2 pieces.



CLEANING TROLLEY FOR COLUMN

9920028 For VANTO/VANTO II Dimensions 1411 x 717 mm, 1142 mm h

Trolley to lift and clean underneath the column base.

ACCESSORIES TROLLEY

9920001

Made of stainless steel. With three shelves and lateral rail supports for clamps. Dimensions: 935 mm length, 435 mm width, 810 mm height.



UNILATERAL STAINLESS STEEL ACCESSORIES TROLLEY

9920003

Mobile trolley on antistatic castors of 90 mm diameter. The trolley is equipped with side rails for accessories dimensions 25x10 mm and 600 mm length.

Complete with one wire mesh basket, dimensions 285 x 600 x 130h mm.



BILATERAL STAINLESS STEEL ACCESSORIES TROLLEY

9920006

Mobile trolley on antistatic castors of 90 mm diameter. With 4 (2 on each side) side rails accessory storages, dimensions 25x10 mm and 600 mm length. Complete with 2 (1 on each side) wire mesh baskets, dimensions 285 x 600 x 130h mm each.



COMPONENT STAND

9920051 For VANTO/VANTO II - ASSO - VITA

For head, back and leg sections. Dimensions 985 x 715 mm, 1567 mm h.







GYNAECOLOGY | UROLOGY | PROCTOLOGY



SINGLE GOEPEL KNEE CRUTCH

9902002

Knee crutch adjustable via ball-and-socket joint, complete with cushion and fixing strap.

To be used with clamp to be ordered separately (advised code 9901023).



SINGLE PAEDIATRIC GOEPEL KNEE CRUTCH

9902012

Knee crutch adjustable via ball-and-socket joint with cushion and fixing strap.

To be used with clamp to be ordered separately (advised code 9901023).



DIRECT PLACEMENT STIRRUP (PAIR)

R050103000 Patient maximum weight capacity: 159 kg

Adjustable by a pressure lever at the end of the accessory, which activates a gas spring. Complete with antistatic cushions.

To be used with 2 clamps to be ordered separately (code R050204610).



DIRECT PLACEMENT STIRRUP (PAIR)

R050105000 Patient maximum weight capacity: 227 kg

Adjustable by a pressure lever at the end of the accessory, which activates a gas spring. Complete with antistatic cushions.

To be used with 2 clamps to be ordered separately (code R050204610).

DIRECT PLACEMENT STIRRUP (PAIR)

R050108100 Patient maximum weight capacity: 363 kg

They can be placed on the table through a single rotation of a lever, placed at the extremity of the accessory itself, which operates on a gas spring. They are complete with antitatic cushions and safety locking system, with silicon

To be used with 2 clamps to be ordered separately (code R050204610).



CLAMP FOR DIRECT PLACEMENT STIRRUP

R050204610

Universal fast-locking clamp for boot stirrups code R050103000 - R050105000 - R05108100.



STIRRUPS CART

R050101000

Stirrup cart designed to fit most surgical stirrups.



KNEE SUPPORT FOR PROCTOLOGY AND DISC SURGERY (PAIR)

9907026 For VANTO/VANTO II-ASSO-VITA

9907026P For VANTO/VANTO II-ASSO-with viscoelastic cushions - VITA

For proctology to attach onto the side rails of the single part leg section (code 9930M02). Height and length adjustable for an optimal patient positioning.





FRAME FOR INSTRUMENT TRAY OR T.U.R. DRAINAGE SET

9911012 Dimensions 302 x 332 mm

For either perineal instrument tray code 9911013 or T.U.R. drainage set code 9911202.



PERINEAL INSTRUMENT TRAY

9911013 Dimensions 352 x 324 x 20 mm

To be used with dedicated frame code 9911012 to be ordered separately.



UROLOGICAL PAN/T.U.R. DRAINAGE SET

9911202 Dimensions 352 x 325 x 100 mm

With drain and recovery strainer, and flexible tube to floor box.

To be used with frame code 9911012 to be ordered separately.



FLOOR MOBILE FRAME

9911005

Liquid harvest mobile stainless steel bucket, complete with 4 castors and handle.
Dimensions: 840 mm h, 385 mm base diameter.

PATIENT HANDLE FOR GYNAECOLOGY (SINGLE)

9924021

Advised quantity: 2 pieces.



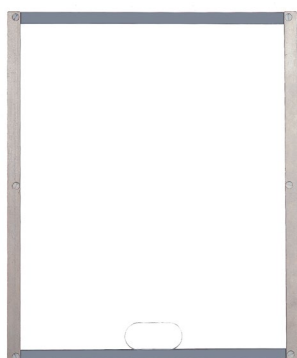
VASCULAR



X-RAY CASSETTE HOLDER

9922002

Holding arm for positioning x-ray cassettes under radiotransparent table top. Mounted on side rails by clamp (included). Dimensions 185 x 315 x 345 mm.



FRAME FOR X-RAY CASSETTES

9929003

For the insertion of the x-ray cassettes under the tabletop. 300 x 460 mm dimensions.



HEADREST FOR VASCULAR AND XY VANTO/VANTO II TABLE TOP

9905068 For VANTO/VANTO II vascular table top - codes 8830000-8833000

Removable, complete with soft, radiolucent and antistatic cushion comfortable for the decubitus of the patient.

Section dimensions: 550 x 332 mm, height 129 mm.

Cushion dimensions: 550 x 300 mm, height 80 mm



RECLINABLE HEADREST FOR VANTO/VANTO II VASCULAR TABLE TOP AND XY TABLE TOP

9905071 For VANTO/VANTO II vascular table top - codes 8830000-8833000

Removable and complete with integrated removable soft cushion, which is radiolucent, antistatic, viscoelastic and memory foam with a minimum thickness of 80 mm for a comfortable patient positioning even during long procedures.

PLATE WITH SIDE RAILS FOR VANTO/VANTO II VASCULAR TABLE TOP AND XY TABLE TOP

9933023 For VANTO/VANTO II vascular table top - codes 8830000-8833000

Radiolucent, with side rails. To be used with VANTO/VANTO II vascular table top and VANTO/VANTO II X/Y vascular table top. Length with side rails 639 mm.



PLATE WITH SIDE RAILS FOR CARBON FIBRE SECTIONS

9933015 For OPT 30/1 - 40/1 - ASSO - VANTO/VANTO II - VITA

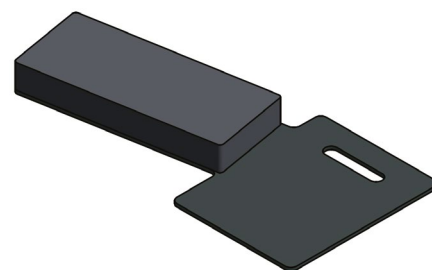
Radiolucent, with side rails holder (length with side rails: 570 mm). It is used on carbon fibre sections codes 9933050 - 9933060 - 9930047.



ARM SUPPORT UNDER THE CUSHION FOR VASCULAR TABLE TOP

9906033

Entirely radiolucent arm support complete with a soft, easily removable mattress (dimensions 600 X 250 mm). It can be used on the left or on the right side of the table top. The support plate must be placed under the cushion of the vascular table top.





ORTHOPAEDICS | TRAUMATOLOGY



BACK PLATE FOR SHOULDER SURGERY

9907031 For OPT 30/1

With two lateral adjustable and removable parts, for free positioning and access to the shoulder.

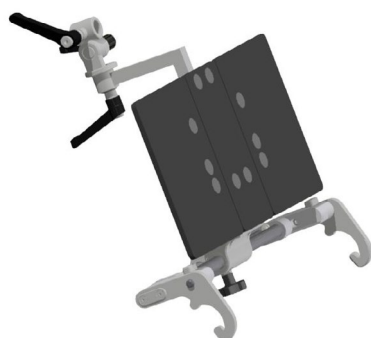
Complete with adjustable headrest and its support.



BACK PLATE FOR SHOULDER SURGERY

9907065 For OPT 40/1

With two removable side sections for free access to the shoulder to be operated. **To be used with supporting bar (code 9924024) and horse-shoe shaped headrest (code 9905011) or modular helmet headrest (code 9905058), all to be ordered separately.**

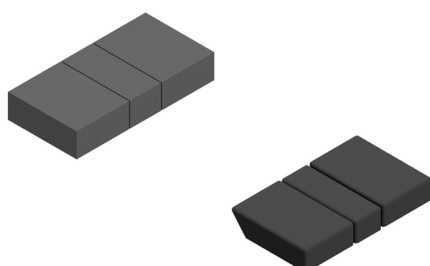


BACK PLATE FOR SHOULDER SURGERY

9907061 For VANTO/VANTO II - ASSO - VITA

With two removable side sections for free access to the shoulder to be operated. **To be used with supporting bar (code 9924024) and horse-shoe shaped headrest (code 9905011) or modular helmet headrest (code 9905058), all to be ordered separately.**

To be completed with suitable cushions to be chosen between: 9907061SA - 9907061VA



CUSHIONS FOR SHOULDER SURGERY

9907061SA for tabletops having FOAMED CUSHIONS

9907061VA for tabletops having PUR or VISCOELASTIC CUSHIONS

Suitable for completing the back plate for shoulder surgery code 9907061

BACK PLATE FOR SHOULDER SURGERY

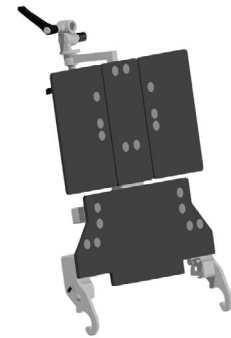
9907071 For VANTO/VANTO II - ASSO

9907083 For VITA

With two removable lateral sections for a free access to the shoulder to be operated.

To be used with support rod (code 9924024) and headrest (code 9905011) or detachable helmet (code 9905058) to be ordered separately.

To be completed with suitable cushions to be chosen between: 9907071SA - 9907071VA

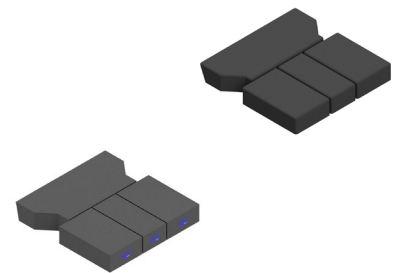


CUSHIONS FOR SHOULDER SURGERY

9907071SA for tabletops having FOAMED CUSHIONS

9907071VA for tabletops having PUR or VISCOELASTIC CUSHIONS

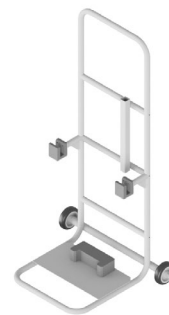
Suitable for completing the back plate for shoulder surgery codes 9907071 and 9907083.



TROLLEY FOR BACK PLATE FOR SHOULDER SURGERY

9907071T

Trolley for the handling of the back plate for shoulder surgery code 9907071.

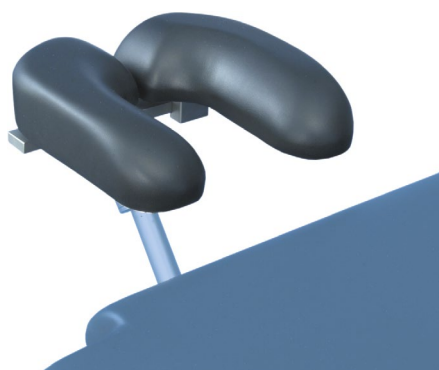


SUPPORTING BAR FOR HEADRESTS

9924024

To be used with headrest (code 9905011) or helmet headrest (code 9905034/9905058) together with the back plate for shoulder surgery; or to be used with headrest (code 9905011 and 9905039) and the connecting adapters to be ordered separately according to the table model.





HORSE-SHOE SHAPED HEADREST

9905011

Height and width adjustable, swivelling on ball and socket joint, complete with antistatic cushion. For patients in prone and supine decubitus.

Used with supporting bar for headrest (9924024) and adaptor according to the table, both should be ordered separately.



MODULAR HELMET HEADREST

9905058

To be used with supporting bar 9924024 and back plate for shoulder surgery. The headrest is modular, with 2 easily removable lateral parts to facilitate anaesthesia of the patient.



PADDED BODY STRAP

9914013 For OPT 30/1 - 40/1 - ASSO - VANTO/VANTO II - VITA

Fixing system for the patient in beach-chair position to the side rails of the back plate for shoulder surgery. Washable, length 1.900 mm and width on the padded point 150 mm.



LATERAL SUPPORT FOR SHOULDER SURGERY

9908029

Support complete with lateral body and cushion to be used for shoulder surgery in beach-chair position and as back support. Dimensions 509 mm height x 150 mm diameter, complete with clamp.

PLATE FOR HUMERUS SURGERY

9906027 For OPT 40/1

Radiolucent, to use with patient in prone position. It is complete with cushion.

To be fitted onto back plate for shoulder surgery code 9907065.

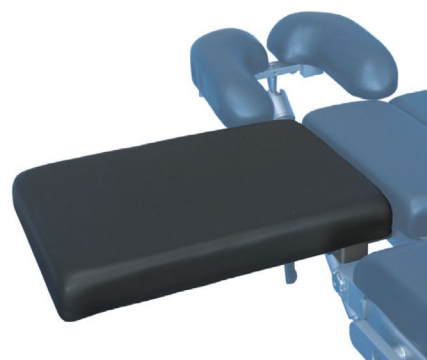


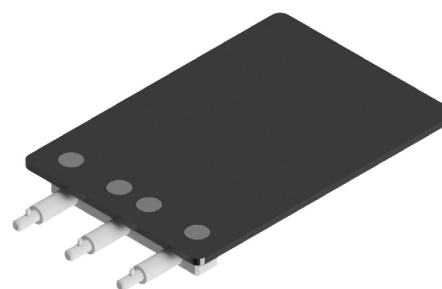
PLATE FOR HUMERUS SURGERY

9906020

Radiotranslucent, to use with the patient in the prone position.

To be applied to the back plate for shoulder surgery code 9907061.

To be completed with suitable cushions to be chosen between: 9906020SA - 9906020VA



CUSHIONS FOR PLATE FOR HUMERUS SURGERY

9906020SA for tabletops having FOAMED CUSHIONS

9906020VA for tabletops having PUR or VISCOELASTIC CUSHIONS

Suitable for completing the plate for humerus surgery code 9906020

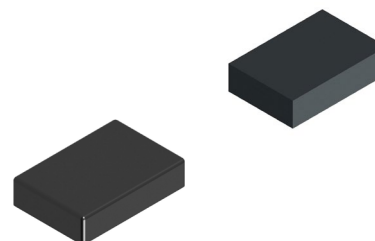


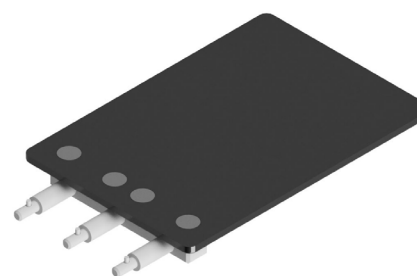
PLATE FOR HUMERUS SURGERY

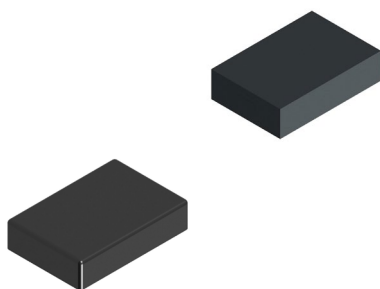
9906031

Radiotranslucent, to use with the patient in the prone position.

To be applied to the back plate for shoulder surgery code 9907071.

To be completed with suitable cushions to be chosen between: 9906031SA - 9906031VA





CUSHIONS FOR PLATE FOR HUMERUS SURGERY

9906031SA for tabletops having FOAMED CUSHIONS

9906031VA for tabletops having PUR or VISCOELASTIC CUSHIONS

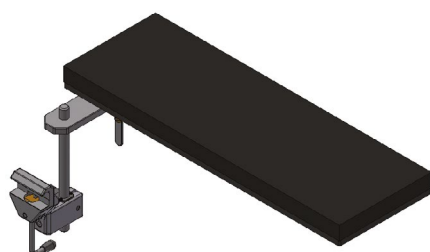
Suitable for completing the plate for humerus surgery code 9906031



HEIGHT ADJUSTABLE PLATE FOR HUMERUS SURGERY

9909013

Radiolucent, orientable on ball-and-socket joint, to use with patient in prone position. Complete with cushion (470 x 190 x 40 mm) and clamp for side rails. Height adjustment range of 150 mm.



ADJUSTABLE PLATE FOR HUMERUS AND ARM SURGERY

9909016 Dimensions 600 x 200 x 30 mm

Radiolucent, with double adjustment: 140 mm in heights and 40 mm in horizontal slide. It can be used on both left or right side of the table top. The plate can be orientated of $\pm 90^\circ$ towards the table top.

It is complete with a removable cushion of 30 mm and clamp with a rapid lock for the side rails.



HUMERUS AND FOREARM POSITIONING DEVICE

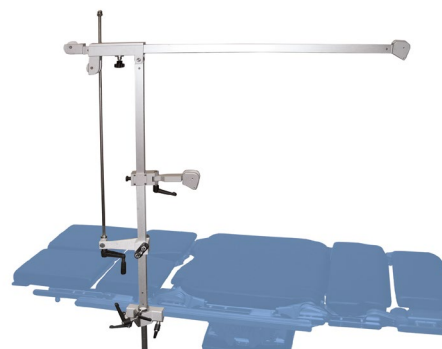
9907038

With patient in supine position, made of a countertraction post, positioning system and hand traction. Complete with 2 clamps.

LIGHT SHOULDER ARTHROSCOPY DEVICE

9907072 For 30/1 - 40/1 - ASSO - VANTO/VANTO II - VITA

With double traction system, tiltable, extensible, height adjustable and fully orientable on clamp. Complete with strings, straps and clamp.



OPT ARM

99070770

Patient positioning device for arthroscopic surgery. OPT Arm is used to safely move and hold the patient's arm during surgery.

To be used with disposable kit (code 9907077S) to be ordered separately.



DISPOSABLE KIT FOR OPT ARM

9907077S

Disposable kit for OPT Arm complete with sterile drape made of velcro, a sterile cloth to cover the accessory and a sterile fixing tape. It contains 10 disposable pieces.

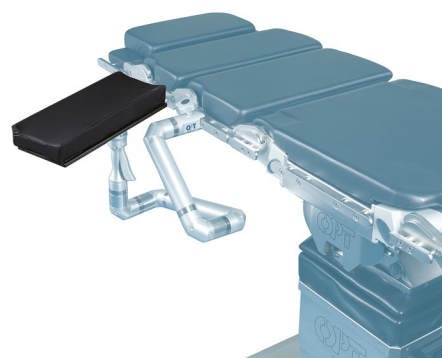


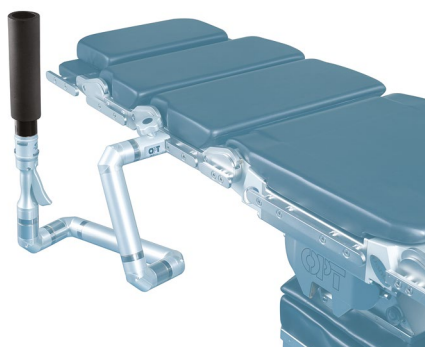
ARM SUPPORT SURGERY TABLE FOR OPT ARM

9907077D

Thanks to this plate it is possible to provide safe and easy patient positioning in lateral decubitus (park bench).

To be used together with OPT Arm code 99070770





COUNTERTRACTION POLE FOR OPT ARM

9907077E

To be used together with OPT Arm code 99070770.



HAND SURGERY TABLE

9909002 Dimensions 700 x 300 mm

9909004 Dimensions 700 x 500 mm

Completely radiolucent, height adjustment range 55 mm, complete with antistatic cushion of 40 mm, traction device and clamp. Patient maximum weight capacity: 360 kg.



ARM AND HAND SURGERY TABLE WITHOUT A STAND

9909015 In phenolic resin

Extremely resistant and light, easy to use and completely radiolucent. Height adjustable for a correct alignment with the operating table. Complete with antistatic cushion and 2 clamps.

Dimensions: 760 x 380 mm.



HIP PROTHESIS POSITIONING DEVICE

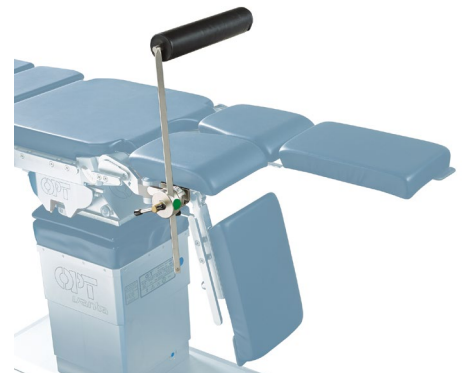
9908027

It is made of 2 height adjustable iliac crest tampon supports and 1 orientable and height adjustable sacral support. Complete with fast locking clamps to be fitted onto the side rails.

MENISCUS POSITIONING DEVICE

9907003

Mounted on square section bar, without knee lateral supports, with clamp included.



KNEE POSITIONING DEVICE WITH LATERAL ADJUSTABLE SUPPORTS WITH CLAMP

9907032

Mounted on square section bar, with swivelling lateral adjustment supports, with clamp included.



KNEE ARTHROSCOPY DEVICE

9907034

Tiltable, height adjustable, with width regulation. Complete with padded belt and clamp.



FOLDABLE KNEE ARTHROSCOPY DEVICE

9907075

Reclinable, spreadable, with tiltable adjustable lateral supports, complete with padding and clamp.





SLIDING ROLLER SUPPORT FOR KNEE PROTHESIS

9909009

Height adjustable +/- 55 mm. and length adjustable 340 mm. For a safe and precise patient positioning.

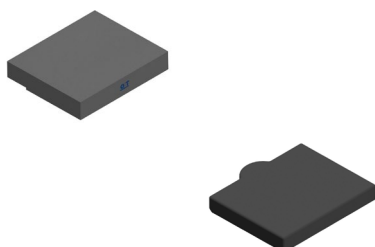


CARBON FIBRE HIP PROTHESIS DEVICE

9923069 For VANTO/VANTO II - ASSO

Made of carbon fibre. To be used with the patient in supine position for a total 360° radiolucency, and with removable and interchangeable leg supports (code 9923067).

To be completed with suitable cushions to be chosen between: 9923069SA - 9923069VA



CUSHIONS FOR CARBON FIBRE HIP PROTHESIS DEVICE

9923069SA for tabletops having FOAMED CUSHIONS

9923069VA for tabletops having PUR or VISCOELASTIC CUSHIONS

Suitable for completing the plate for carbon fibre hip prosthesis device code 9923069.



PELVIC - PODALIC ACCESSORY

9923071 For VANTO/VANTO II - ASSO - VITA

9923079 For OPT 30/1 - 40/1

In radiolucent material. Complete with countertraction post and spatula supports for adults and children. Possibility of being attached to the operating table and/or traction device group. The code 9923079 applies only to a traction device.

PELVIS PLASTER DEVICE

9923057 For VANTO/VANTO II - ASSO - VITA

Complete with countertraction post and spatula supports for adults and children. To be attached to the lower limbs traction device.



LOWER LIMBS TRACTION DEVICE

9923046 For OPT 30/1 - 40/1

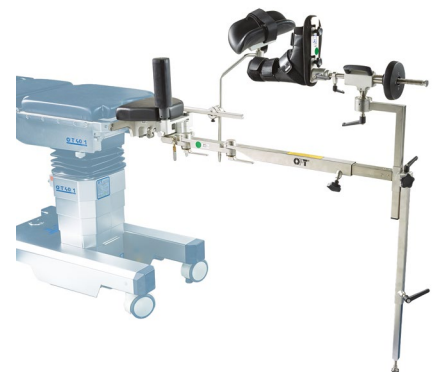
Kit includes:

- 1 fixed pelvis support
- 1 traction arm with screw tension device and traction device standing leg/bar (indifferently left or right)
- 1 standing device

and complete with the following:

- 1 countertraction bar with cylindrical cushion (code 9924025);
- 1 elongation bar (code 9919001);
- 1 adult traction boot - size M (code 9918003);
- 1 single Goepel knee crutch (code 9902002);
- 1 radial setting clamp (code 9901023)

To be used only with standing leg bar installed.



LOWER LIMBS TRACTION DEVICE

9923052 For VANTO/VANTO II - ASSO - VITA

Kit includes:

- 1 fixed pelvis support
- 1 pair of tiltable and removable buttock support
- 1 pair removable leg supports
- 1 traction arm with screw tension device, indifferently left or right

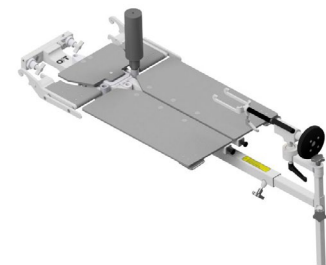
and complete with the following:

- 1 countertraction bar with cylindrical cushion (code 9924025);

- 1 adult traction boot - size M (code 9918003);
- 1 single Goepel knee crutch (code 9902002);
- 1 clamp for Goepel knee crutch (code 9901023)

To be completed with:

- n.1 Set of cushions, to choose between: 9923052SA or 9923052VA

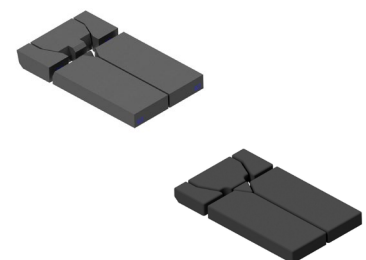


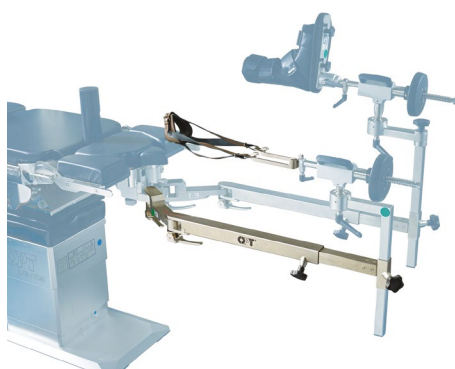
CUSHIONS FOR LOWER LIMBS TRACTION DEVICE

9923052SA for tabletops having FOAMED CUSHIONS

9923052VA for tabletops having PUR or VISCOELASTIC CUSHIONS

Suitable for completing the plate for lower limbs traction device code 9923052.





SINGLE TRACTION ARM

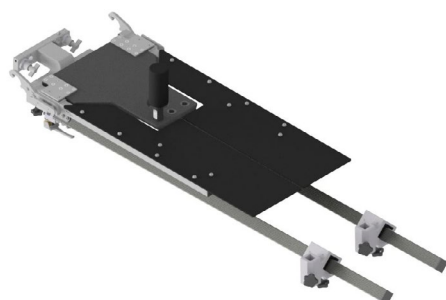
9923047 To complete the traction system code 9923046. With n. 1 stand supplied.

9923053 To complete the traction system code 9923052

Complete with:

- 1 stirrup
- 2 ankle leather cuffs (1 for adults and 1 for children)
- 1 plate for positioning the safe leg

Without screw tension device to be ordered separately.



LOWER LIMBS TRACTION DEVICE WITH CARBON PELVIS SUPPORT

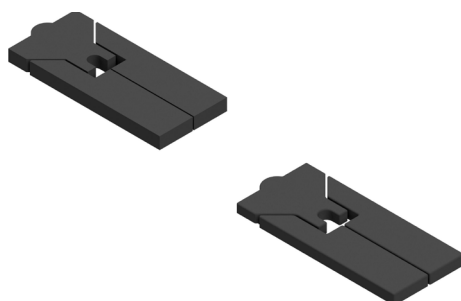
9923089

Lower limbs traction device with carbon pelvis support, composed of:

- n.1 Carbon pelvis support
- n.1 Traction bars support
- n.2 Carbon bars with easy opening
- n.1 (pair) Legs section for traction device

To be completed with:

- n.2 Screw tension devices
- n. 2 Traction boots
- n.1 Set of cushions, to choose between:
9923089SA or 9923089VA

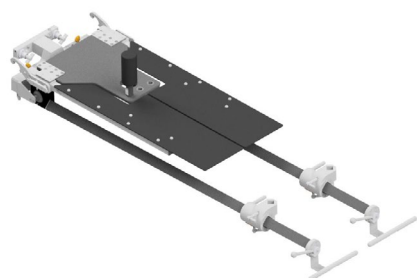


CUSHIONS SET FOR LOWER LIMBS TRACTION DEVICE WITH CARBON PELVIS SUPPORT

9923089SA for tabletops having FOAMED CUSHIONS

9923089VA for tabletops having PUR or VISCOELASTIC CUSHIONS

Suitable for completing the traction device code 9923089.



360° LOWER LIMBS TRACTION DEVICE WITH CARBON PELVIS SUPPORT (MIS)

9923090

360° lower limbs traction device with carbon pelvis support (MIS) composed of:

- n.1 Carbon pelvis support
- n.1 Traction bars support
- n.2 Carbon traction bar with 360° movement
- n.1 (pair) Legs section for traction device

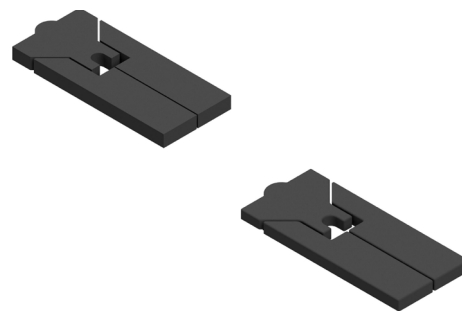
To be completed with:

- n.2 Screw tension devices
- n. 2 Traction boots
- n. 1 Set of cushions, to choose between:
9923090SA or 9923090VA

CUSHIONS SET FOR 360° LOWER LIMBS TRACTION DEVICE WITH CARBON PELVIS SUPPORT (MIS)

9923090SA for tabletops having FOAMED CUSHIONS
9923090VA for tabletops having PUR or VISCOELASTIC CUSHIONS

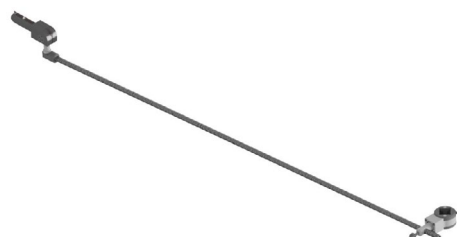
Suitable for completing the traction device code 9923090.



RADIOLUCENT DEVICE FOR TRACTION MAINTENANCE

9923093

Suitable for completing the traction device code 9923090.

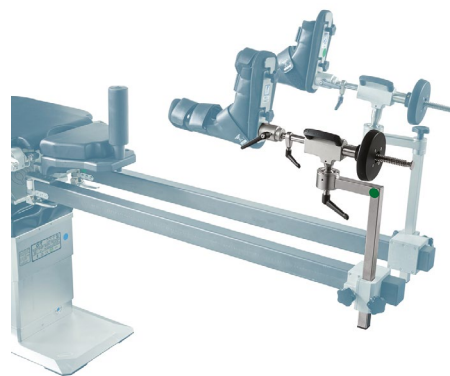


FIXED SCREW TENSION DEVICE

992304900

Screw tension device mounted on a swivelling ball, with micro-adjustment through handwheel.

Suitable for completing second traction arm code 9923047 - 9923053 - 9923066, and of the traction group code 9923089 or 9923090.



SCREW TENSION DEVICE WITH HORIZONTAL ADJUSTMENT

992307700

Screw tension device mounted on a swivelling ball, with micro-adjustment through handwheel.

Suitable for completing second traction arm code 9923047 - 9923053 - 9923066, and of the traction group code 9923089 or 9923090.



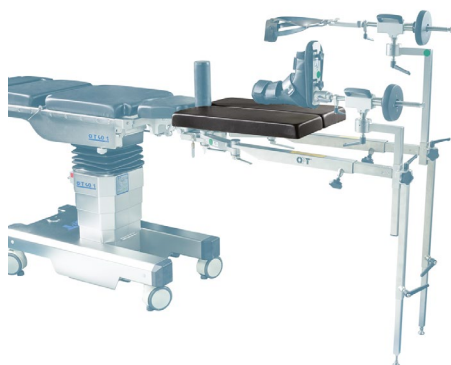


SCREW TENSION DEVICE WITH LONGITUDINAL ADJUSTMENT

992309100

Dynamometer mounted on a direct drive swivelling ball with macro-adjustment and 50 mm step and micro-adjustment by handwheel.

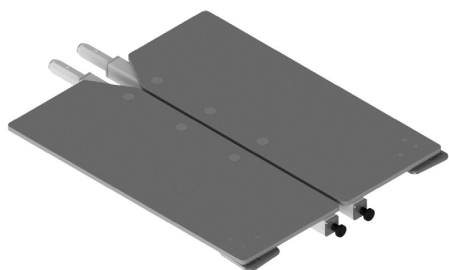
Suitable for completing second traction arm code 9923047 - 9923053 - 9923066, and of the traction group code 9923089 or 9923090.



PAIR OF TRACTION LEG SUPPORTS

9923064 For traction device OPT 40/1 – 30/1

Legs section for traction support with sphere graft. Not tiltable. Advised for lower limbs traction device code 9923046 (but already included in code 9923052) or for hip prosthesis device code 9923069.

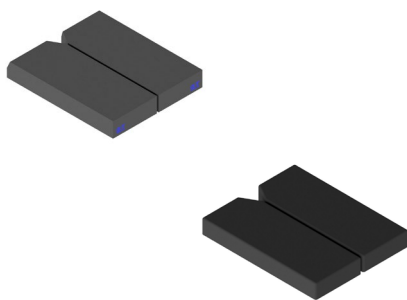


PAIR OF TRACTION LEG SUPPORTS

9923067 For traction device VANTO/VANTO II - ASSO - VITA

Leg sections to position the patient and support the legs. For traction device with ball joint, not foldable. Recommended for lower limb traction device code 9923046 (and already included in code 9923052) or for hip prosthesis device code 9923069.

To be completed with suitable cushions to be chosen between: 9923067SA - 9923067VA



CUSHIONS FOR PAIR OF TRACTION LEG SUPPORTS

9923067SA for tablespots having FOAMED CUSHIONS

9923067VA for tablespots having PUR or VISCOELASTIC CUSHIONS

Suitable for completing the traction leg supports code 9923067.

LEG SUPPORT FOR TRACTION DEVICE

992308500

Flexed leg support for traction device for pelvic surgery with patient in prone position. To be used with traction device code 9923089 or 9923090.



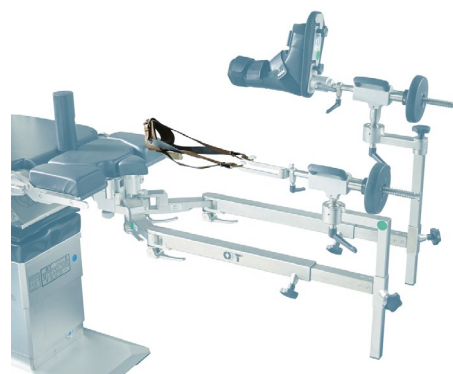
ANKLE LEATHER CUFFS (PAIR)

9912001 Adults

9912002 Paediatric

9912003 N. 1 for adults n. 1 for children

To be used with lower limbs traction device.



ELONGATION BAR

9919001 Length: 480 mm

9919003 Length: 300 mm

Complete with clamp.

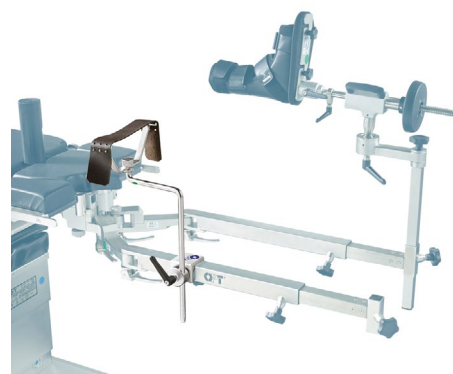


POPLITEUS HOLDER ARCH (SINGLE)

9902014

For lower limbs traction device, complete with clamp.

Advised quantity: 2 pieces.





REMOVABLE TRACTION STANDING DEVICE LEG/BAR

9923045

9923074 For orthopaedic tabletop VANTO/VANTO II Code 88150001.

For the lower limbs traction device code 9923052.



TRACTION BOOT (SINGLE)

9918003 Size M (41/45)

9918004 Size S (35/40)

9918005 Size XS (32/34)

9918006 Pediatric

To be fixed to a metal plate on a ball-and-socket joint. To be used with lower limbs traction device, it can be used on both right and left foot.



LEG SUPPORT PLATE (POPLITEUS HOLDER)

9902017 for lower limbs traction device code 9923046 and 9923052

9923092 for carbon lower limbs traction device code 9923089 and 9923090

Radiolucent popliteus holder plate for traction devices.
Supplied complete with clamp.



L-SHAPED COUNTER TRACTION AND PELVIS SUPPORT POST

9924026

To be used on lower limbs traction device with patient in lateral decubitus.

TIBIA NAILING DEVICE

9924027

With popliteus support, complete with cushions and height adjustable. To be fitted onto lower limbs traction device with the possibility of adjusting the leg inclination.



COUNTERTRACTION DEVICE FOR BARIATRIC SURGERY

9923078 For ASSO - VANTO/VANTO II - VITA

Support for countertraction bar to be fitted on lower limbs traction device.



STIRRUP HOLDER DEVICE

9923062

For models Martin, Aescolap, etc.



RIGID STIRRUP HOLDER DEVICE

9923020

To be used with traction arm and screw tension device. Can be rotated and tilted.





TROLLEY FOR MOUNTED LOWER LIMBS TRACTION DEVICE

- 9923048** For OPT 30/1 - 40/1
- 9920070** For VANTO/VANTO II - ASSO - VITA with standard tractions
- 9920070W** For VANTO II WHEELS
- 9920071** For VANTO/VANTO II - ASSO - VITA with carbon fibre tractions
- 9920071W** For VANTO II WHEELS

Complete with wire mesh basket, dimension 600 mm x 600 mm x 300 h mm.
To be ordered according to the table, to the column (fixed/mobile/plus) and to the table top type.

TROLLEYS ADAPTER FOR LOWER LIMBS TRACTION DEVICE



9920070S

Preparation device for trolleys for lower limb traction device that allows to move safely the tractions 9923052.

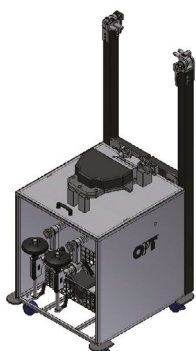
To be used with a single traction arm.



CUBE TROLLEY FOR DISMOUNTED TRACTION DEVICE

9920026

For the rapid and tidy storage of the entire traction system.
Height 950 mm (1100 mm with traction device), width 790 mm (820 mm with traction device).



CUBE TROLLEY FOR DISMOUNTED CARBON FIBRE TRACTION DEVICE

99205500

For the rapid and tidy storage of the entire dismantled traction system.



NEUROLOGY | ENT | OPHTHALMOLOGY



SQUARE SECTION ADAPTER FOR HEADREST

9925010 For OPT 30/1

9925024 For OPT 40/1

Connecting adapter for headrest or for headrest supporting bar (code 9924024), to be used in place of standard head section of the table.



ADAPTER FOR HEADREST

9925052 For ASSO - VANTO/VANTO II - VITA

Connecting adapter for headrest or for headrest supporting bar (code 9924024), to be used in place of standard head section of the table.



SUPPORTING BAR FOR HEADRESTS

9924024

To be used with headrest (code 9905011) or helmet headrest (code 9905034/9905058) together with back plate for shoulder surgery; or to be used with headrest (code 9905011 and 9905039) and adapters to be ordered in relation to the table model.



SUPPORTING BAR - DOUBLE LEVER

9905038

Headrest support with square-shaped insert to be used with trapezoidal back section plate (code 9907068 or 9907063), or adaptor with square-shaped insert with headrest 9905011 and 9905039.

SQUARE-SHAPED HEADREST

9905039 - For adults

9905039J - Pediatric

To be used with supporting bar 9905038 and head section adapter (to be ordered in according to the table) or with supporting bar 9924024 and related head section adapter (to be ordered depending on the table). For patients in supine decubitus.

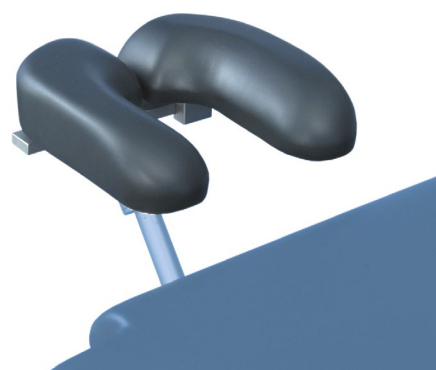


HORSE-SHOE SHAPED HEADREST

9905011

Height and width adjustable, swivelling on ball and socket joint, complete with antistatic cushion. For patients in prone and supine decubitus.

Used with supporting bar for headrest (9924024) and adaptor according to the table, both should be ordered separately.



HORSE-SHOE SHAPED FACIAL SUPPORT

9905035

Width adjustable, for patient in prone position. Complete with cushions, supporting bar and clamp.

To be used with cushion for disc surgery code 9921002 to be ordered separately.



HEADREST - HEIGHT ADJUSTABLE BY ROTATING KNOB

9905001

Swivelling on ball and socket joint, complete with antistatic cushions.

To be used with connecting adapter (to be ordered in according to the table top) to be ordered separately.





HEADREST ON BALL JOINT

9905003

Height adjustable, complete with antistatic cushions.

To be used with connecting adapter (to be ordered in according to the table top) to be ordered separately.



SQUARE-SHAPED HEADREST

9921009 Dimensions: 260 x 260 x 80 mm - adults

9921010 Dimensions: 240 x 240 x 80 mm - paediatric

Square, ergonomic shape, radiolucent and antistatic material.



RADIOLUCENT SPINAL FRAME

9907082

For positioning the patient in prone position, type Wilson. 360° radiolucent. Supplied complete with trolley.



POSITIONING DEVICE FOR INTERVERTEBRAL DISC PROCEDURE

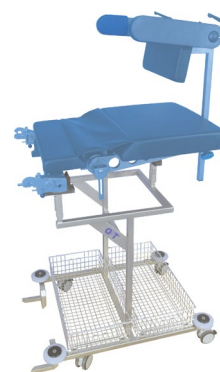
9907057 For ASSO - VANTO/VANTO II - VITA

To position the patient in genupectoral position. Complete with buttocks support, lateral patient body supports and height adjustable knee support by crank.

TROLLEY FOR POSITIONING DEVICE FOR INTERVERTEBRAL DISC PROCEDURE

9920022	For VANTO/VANTO II with table top code 8812000
9920022W	For VANTO II WHEELS with table top code 781200001 - 781200002
9920032	For VANTO/VANTO II with table top code 8811000
9920032W	For VANTO II WHEELS with table top code 781100001 - 781100002
9920031	For ASSO
9920037	For VITA

Trolley for transport and easy mounting/dismounting of positioning device. Complete with 2 wire mesh baskets of the following dimensions: 600 x 300 x 130h mm.



CUSHION FOR DISC SURGERY

9921002	Dimensions: 815 x 450 x 95 mm - adults
9930033	Dimensions: 615 x 350 x 85 mm - paediatric

For intervertebral disc surgical operation, with abdominal cut-out.



CERVICAL RACHIS TRACTION DEVICE

9923063

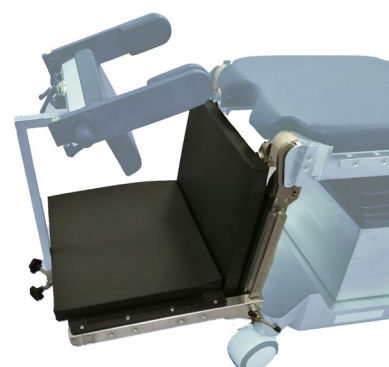
To be used with headrest adapter (according to the table model), supporting bar 9924024 and headrest 9905011, to be ordered separately.

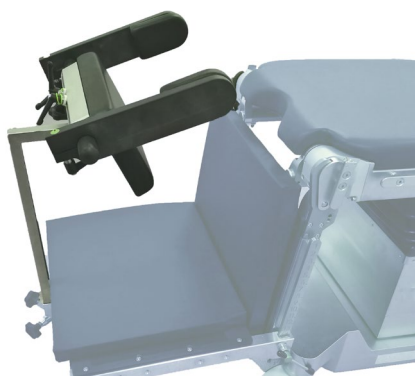


POSITIONING DEVICE FOR INTERVERTEBRAL DISC PROCEDURE

9907084 For VANTO/VANTO II - ASSO - VITA

Complete with removable and 300mm height adjustable kneeling plate complete with 80mm cushions. Kneeling plate come with height adjustable support. Advised to be used with support belt code 9914009 or buttock support code 9907085.

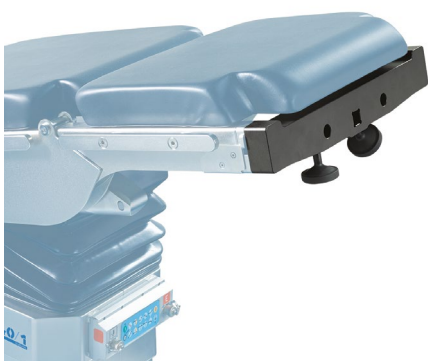




BUTTOCK SUPPORT FOR INTERVERTEBRAL DISC DEVICE

9907085

Buttock support for intervertebral disc device code 9907084 complete with lateral supports. The support is adjustable for better patient comfort and positioning with lateral supports.



ADAPTER FOR ALLOY SKULL CLAMP

9925016 For OPT 30/1

9925025 For OPT 40/1

To be used instead of the standard head section, it is used to fix the skull clamp or the supporting bar code 9905038.



ADAPTER FOR ALLOY SKULL CLAMP

9925053 For CENTURY - ASSO - VANTO/VANTO II - VITA

9925054 Radiolucent - for CENTURY - ASSO - VANTO/VANTO II - VITA

To be used instead of the standard head section, it is used to fix the skull clamp or the supporting bar code 9905038.



ALLOY SKULL CLAMP

C3101611 Type 1 - Mayfield

C3103747 Type 2 - Doro

Provides 3 point rigid cranial fixation by giving flexibility and safety in the positioning of the pins around the critical areas of the skull. With quick release lock.

ADULT HORSESHOE HEADREST

C3101613 Type 1 - Mayfield

C3103785 Type 2 - Doro

Adult horseshoe rest for skull support in prone or supine position. With vertical and lateral adjustments that allow flexibility in patient positioning. Adjustable pad base accommodates various head sizes and gel pads for more comfort. With pulley rod attachment for skeletal traction.



ADULT REUSABLE SKULL PIN

C3101614 Type 1: - Mayfield: N. 1 piece/Minimum quantity required 3 pieces

C3103749 Type 2: - Doro: N. 3 pieces kit

Reusable.



PAEDIATRIC REUSABLE SKULL PIN

C3101615 Type 1: - Mayfield: N. 1 piece -Minimum quantity required 3 pieces

C3103750 Type 2: - Doro: N. 3 pieces kit

Reusable.



ULTRA BASE UNIT

C3102321 Type 1 - Mayfield

C3103746 Type 2 - Doro

Support that facilitates attaching the skull clamp or the skull clamp to the operating table.



ADAPTOR



C3102323 Type 1 - Mayfield

C3103748 Type 2 - Doro

Attaches to base unit to provide flexibility in positioning via 360° rotation. Adapts skull clamps to base units.

PAEDIATRIC HORSESHOE REST



C3102610 Type 1 - Mayfield

C3103821 Type 2 - Doro

Horseshoe shaped headrest provides cranial support in the prone or supine position for infants and young children. Vertical and lateral adjustments allow flexibility in patient positioning. Adjustable pad base accommodates various head sizes. Complete with gel pads that provide comfort.

CROSS-BAR ATTACHMENT FOR SKULL CLAMP



9907012 For OPT 30/1 - 40/1

9907058 For ASSO - VANTO/VANTO II - VITA

For head positioning accessories and neurosurgery accessories, with patient in a seated position. Complete with clamps.

CARBON FIBRE RADIOLUCENT HEADREST SYSTEM

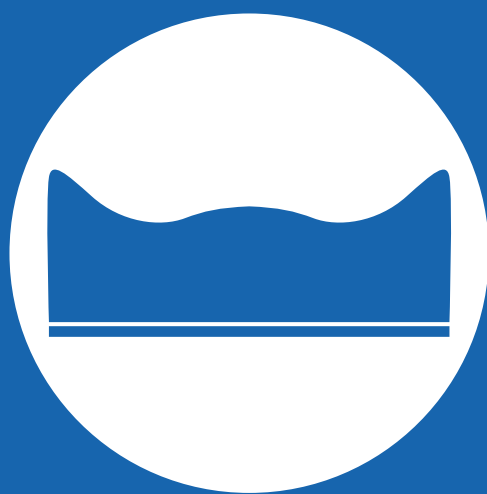


C3103728 Type 1 - Mayfield

C3103751 Type 2: - Doro: with disposable adult skull pins (36 pcs.) - Code C310387
or with disposable children skull pins (36 pcs.) - Code C3103808

Complete with:

- radiolucent skull clamp
- radiolucent base unit
- disposable adult skull pins - no. 3 pieces



GEL PADS



CLOSED HEAD RING

C3103178 Diameter cm 9x4x2 (DM AP001)

C3103139 Diameter cm 14x6x3,5 (DM AP002)

C3103127 Diameter cm 20x7,5x4,5 (DM AP003)



OPEN HEAD RING

C3103180 Diameter cm 9x4x2 (DM AP011)

C3103159 Diameter cm 14x6x3,5 (DM AP012)

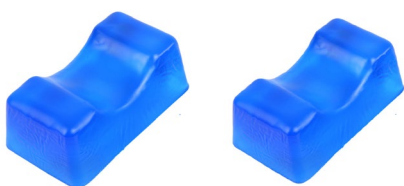
C3103128 Diameter cm 20x7,5x4,5 (DM AP013)



PRONE HEADREST

C3103181 cm 23x19x13 (DM AP023)

C3103140 cm 28x23x14,5 (DM AP022)



PAIR OF HEEL GEL SUPPORTS

C3103160 cm 20x11x7 (DM AP031)

C3103388 cm 17x11x5 (DM AP032)



CHEST ROLL

C3103197 cm 30x15x10 (DM XG041)

C3103740 cm 40,5x10x 8,5 (DM AP045)

C3103130 cm 40,5x15x10 (DM XG042)

C3103161 cm 51x15x10 (DM XG043)

ARMBOARD PAD

C3103143 cm 40x12,5x2 (DM AP071)

C3103162 cm 60x12,5x2 (DM AP072)



CONTOURED HEADREST

C3103179 cm 19x19x6 (DM AP081)



UNIVERSAL PATIENT POSITIONER

C3103375 cm 16x8x4,5 (DM AP091)

C3103376 cm 33x7x5 (DM AP092)

C3103144 cm 33x12x6 (DM AP093)

C3103145 cm 36x12,5x7 (DM AP094)



HEAD PAD

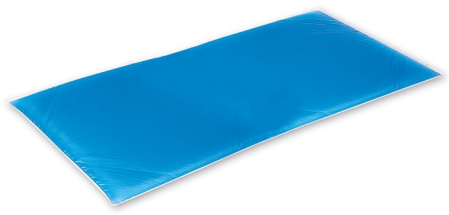
C3103182 cm 27x23x7 (DM AP110)



WILSON FRAME PAD

C3103188 cm 75x25,5x2,5 (DM AP210) - set 2 pieces





OPERATING TABLE PAD

- C3103060** cm 15x50x1,5 (DM AP408A)
- C3103183** cm 23x50x1 (DM AP301)
- C3103158** cm 50x50x1 (DM AP303)
- C3103049** cm 70x50x1,5 (DM AP406)
- C3103184** cm 99x50x1 (DM AP302)
- C3102981** cm 117x50x1,5 (DM-AP409A)
- C3102912** cm 117x50x1 (DM-AP403A)
- C3103186** cm 183x50x1 (DM AP402)
- C3103185** cm 193x86x1 (DM AP401)
- C3103057** cm 117x50x1 (DM AP409) WITH PERINEAL CUT



GOEPEL KNEE CRUTCH PAD

- C3103377** cm 52x30x1 (DM AP803) - set 2 pieces



BOOT STIRRUP PAD

- C3103194** set 2 pcs - cm 23x28x1,3 (DM AP901) - set 2 pieces



ARMBOARD PAD

- C3102990** cm 40x12,5x3,8 (DM AP073)

INDEX AND ACCESSORY COMPATIBILITY WITH OPT OPERATING TABLES

Note:

- - accessories compatible with operating tables
- R** - accessories to be installed on side rail
- H** - accessories to be installed on the head side of the operating tables
- L** - accessories to be installed on the feet side of the operating tables
- C** - accessories to be used in combination with other accessories

Compatibility									
Code	Description	Page	VANTOII	VANTO II Wheels	ASSO	VITA	OPT 40/1	OPT 30/1	NOTE
9901007	REMOTE CONTROL HOLDER	12					•	•	R
9901022	QUICK RELEASE CLAMP	12	•	•	•	•	•	•	C+R
9901023	CLAMP WITH RADIAL SETTING AND FAST LOCKING ATTACHMENT	12	•	•	•	•	•	•	C+R
9901024	FIXED CLAMP WITH FAST LOCKING ATTACHMENT	12	•	•	•	•	•	•	C+R
9902002	SINGLE GOEPEL KNEE CRUTCH	22	•	•	•	•	•	•	C+R
9902012	SINGLE PAEDIATRIC GOEPEL KNEE CRUTCH	22	•	•	•	•	•	•	C+R
9902014	POPLITEUS HOLDER ARCH (SINGLE)	44	•	•	•	•	•	•	C
9902017	RADIO LUCENT POPLITEUS HOLDER PLATE (SINGLE)	46	•	•	•	•	•	•	C
9903001	ANAESTHESIA SCREEN	4					•	•	R
9903003	L-SHAPED ANAESTHESIA SCREEN	4	•	•	•	•	•	•	C+R
9903007	ANAESTHESIA SCREEN	4	•	•	•	•			R
9903009	FLEXIBLE SCREEN	4	•	•	•	•	•	•	C+R
9904003	PAIR OF ADJUSTABLE SHOULDER SUPPORTS	13	•	•	•	•	•	•	R
9905001	HEAD REST - HEIGHT ADJUSTABLE BY ROTATING KNOB	51	•	•	•	•	•	•	C+H
9905003	HEAD REST ON BALL JOINT	52	•	•	•	•	•	•	C+H
9905011	HORSE-SHOE SHAPED HEAD REST	34-51	•	•	•	•	•	•	C+H
9905035	HORSE-SHOE SHAPED FACIAL SUPPORT	51	•	•	•	•	•	•	R
9905038	SUPPORTING BAR - DOUBLE LEVER	50	•	•	•	•	•	•	C+H
9905039	SQUARE-SHAPED HEAD REST	51	•	•	•	•	•	•	C+H
9905039J	SQUARE-SHAPED HEAD REST	51	•	•	•	•	•	•	C+H
9905058	MODULAR HELMET HEAD REST	34	•	•	•	•	•	•	C+H
9905068	HEADREST FOR VASCULAR AND XY VANTO/VANTO II TABLE TOP	28	•	•					H
9905071	RECLINABLE HEADREST FOR VANTO/VANTO II VASCULAR TABLE TOP AND XY TABLE TOP	28	•	•					H
9906003	ARM SUPPORT FOR PATIENT IN LATERAL DECUBITUS	9	•	•	•	•	•	•	C+R
9906012	PAEDIATRIC ARM SUPPORT	7	•	•	•	•	•	•	R
9906013	ARM SUPPORT – ON BALL JOINT	7	•	•	•	•	•	•	R
9906019	ARM SUPPORT ON BALL JOINT	7	•	•	•	•	•	•	R
9906020	PLATE FOR HUMERUS SURGERY	35	•	•	•	•			C
9906020SA	CUSHIONS FOR PLATE FOR HUMERUS SURGERY	35	•	•	•	•			C
9906020VA	CUSHIONS FOR PLATE FOR HUMERUS SURGERY	35	•	•	•	•			C
9906021	ARM SUPPORT FOR ADULTS ON BALL JOINT	7	•	•	•	•	•	•	R
9906021P	ARM SUPPORT FOR ADULTS ON BALL JOINT	7	•	•	•	•			R
9906022M	CURVED WIDTH EXTENSION (SINGLE)	18	•	•	•	•	•	•	R
9906023	WIDTH EXTENSION FLAT SHAPE (SINGLE)	18	•	•	•	•	•	•	R + C

Compatibility

Code	Description	Page	VANTOII	VANTO II Wheels	ASSO	VITA	OPT 40/1	OPT 30/1	NOTE
9906023SA	CUSHIONS FOR PLATE FOR HUMERUS SURGERY	18	•	•	•	•			C
9906023VA	CUSHIONS FOR PLATE FOR HUMERUS SURGERY	18	•	•	•	•			C
9906026	ARM SUPPORT - LONGITUDINALLY AND HEIGHT ADJUSTABLE	8	•	•	•	•	•	•	R
9906027	PLATE FOR HUMERUS SURGERY	35					•		C
9906029	ARM SUPPORT FOR PARK BENCH POSITION WITH FAST LOCKING CLAMP	9	•	•	•	•	•	•	R
9906030	ARM SUPPORT ON BALL JOINT WITH LEVER	8	•	•	•	•	•	•	R
9906031	PLATE FOR HUMERUS SURGERY	35	•	•	•	•			C
9906031SA	CUSHION FOR PLATE FOR HUMERUS SURGERY	36	•	•	•	•			C
9906031VA	CUSHION FOR PLATE FOR HUMERUS SURGERY	36	•	•	•	•			C
9906032	ARM SUPPORT ON BALL JOINT	8	•	•	•	•	•	•	R
9906033	ARM SUPPORT UNDER THE CUSHION FOR VASCULAR TABLE TOP	29	•	•					R
9906035	TRIPLE-JOINT ARMREST WITH ONLY ONE FIXING KNOB - WITH VERTICAL MOVEMENT	8	•	•	•	•	•	•	R
9906036	TRIPLE-JOINT ARMREST WITH ONLY ONE FIXING KNOB	8	•	•	•	•	•	•	R
9906801	SUSPENDED ARM STRAP	4	•	•	•	•	•	•	C
9907003	MENISCUS POSITIONING DEVICE	39	•	•	•	•	•	•	R
9907012	CROSS-BAR ATTACHMENT FOR SKULL CLAMP	56					•	•	C+R
9907020	ARCH-SHAPED DEVICE FOR COSTAL EDGE TRACTION	17					•	•	R+C
9907026	KNEE SUPPORT FOR PROCTOLOGY AND FOR DISC SURGERY (PAIR)	23	•	•	•	•	•		R+C
9907026P	KNEE SUPPORT FOR PROCTOLOGY AND FOR DISC SURGERY (PAIR)	23	•	•	•	•	•		R+C
9907031	BACK PLATE FOR SHOULDER SURGERY	32						•	H
9907032	KNEE POSITIONING DEVICE WITH LATERAL ADJUSTABLE SUPPORTS WITH CLAMP	39	•	•	•	•	•	•	R
9907034	KNEE ARTHROSCOPY DEVICE	39	•	•	•	•	•	•	R
9907038	HUMERUS AND FOREARM POSITIONING DEVICE	36	•	•	•	•	•	•	R
9907057	POSITIONING DEVICE FOR INTERVERTEBRAL DISC PROCEDURE	52	•	•	•	•			L
9907058	CROSS-BAR ATTACHMENT FOR SKULL CLAMP	56	•	•	•	•			C+R
9907059	ARCH-SHAPED DEVICE FOR COSTAL EDGE TRACTION	17	•	•	•	•			R
9907061	BACK PLATE FOR SHOULDER SURGERY	32	•	•	•	•			C+H
9907061SA	CUSHIONS FOR BACK PLATE FOR SHOULDER SURGERY	32	•	•	•	•			C+H
9907061VA	CUSHIONS FOR BACK PLATE FOR SHOULDER SURGERY	32	•	•	•	•			C+H
9907065	BACK PLATE FOR SHOULDER SURGERY	32					•		C+H
9907067	FLEXIBLE SUPPORT FOR ANAESTHESIA TUBES	9	•	•	•	•	•	•	R
9907071	BACK PLATE FOR SHOULDER SURGERY	33	•	•	•				C+H
9907071SA	CUSHIONS FOR BACK PLATE FOR SHOULDER SURGERY	33	•	•	•				C+H
9907071VA	CUSHIONS FOR BACK PLATE FOR SHOULDER SURGERY	33	•	•	•				C+H
9907071T	TROLLEY FOR BACK PLATE FOR SHOULDER SURGERY	33	•	•	•				C
9907072	LIGHT SHOULDER ARTHROSCOPY DEVICE	37	•	•	•	•	•	•	R
9907075	FOLDABLE KNEE ARTHROSCOPY DEVICE	39	•	•	•	•	•	•	R
99070770	OPT ARM	37	•	•	•	•	•	•	R+C

Compatibility									
Code	Description	Page	VANTOII	VANTO II Wheels	ASSO	VITA	OPT 40/1	OPT 30/1	NOTE
9907077D	ARM SUPPORT SURGERY TABLE FOR OPT ARM	37	•	•	•	•	•	•	C
9907077E	COUNTERTRACTION POLE FOR OPT ARM	38	•	•	•	•	•	•	C
9907077S	DISPOSABLE KIT FOR OPT ARM	37	•	•	•	•	•	•	C
9907082	RADIOLUCENT SPINAL FRAME	52	•	•	•	•	•	•	R
9907083	BACK PLATE FOR SHOULDER SURGERY	33				•			L
9907084	POSITIONING DEVICE FOR INTERVERTEBRAL DISC PROCEDURE	53	•	•	•	•			L
9907085	BUTTOCK SUPPORT FOR INTERVERTEBRAL DISC	54	•	•	•	•			C
9908001	STERNAL - BACK SUPPORT	14	•	•	•	•	•	•	C
9908002	BACK BUTTOCKS SUPPORT	14	•	•	•	•	•	•	C
9908003	BUTTERFLY-SHAPED CHEST SUPPORT	14	•	•	•	•	•	•	C
9908004	CHEST SUPPORT	15	•	•	•	•	•	•	C
9908005	SACRAL SUPPORT	15	•	•	•	•	•	•	C
9908006	PUBIS SUPPORT	15	•	•	•	•	•	•	C
9908009	UNIVERSAL LATERAL SUPPORT	13	•	•	•	•	•	•	C+R
9908020	CYLINDRICAL LATERAL SUPPORT	15	•	•	•	•	•	•	C
9908021	FLAT SIZE BODY SUPPORT	16	•	•	•	•	•	•	R
9908021P	FLAT SIZE BODY SUPPORT	16	•	•	•	•	•	•	R
9908022	UNIVERSAL LATERAL SUPPORT	13	•	•	•	•	•	•	C+R
9908026	BACK BUTTOCKS SUPPORT	14	•	•	•	•	•	•	C
9908027	HIP PROTHESIS POSITIONING DEVICE	38	•	•	•	•	•	•	R
9908029	LATERAL SUPPORT FOR SHOULDER SURGERY	34	•	•	•	•	•	•	R
9908033	TRIPLE-JOINT LATERAL SUPPORT	14	•	•	•	•	•	•	C+R
9909002	HAND SURGERY TABLE	38	•	•	•	•	•	•	R
9909004	HAND SURGERY TABLE	38	•	•	•	•	•	•	R
9909008	PAIR OF ADJUSTABLE FEET SUPPORTS	13	•	•	•	•	•	•	R
9909009	SLIDING ROLLER SUPPORT FOR KNEE PROTHESIS	40	•	•	•	•	•	•	R
9909013	HEIGHT ADJUSTABLE PLATE FOR HUMERUS SURGERY	36	•	•	•	•	•	•	R
9909015	ARM AND HAND SURGERY TABLE	38	•	•	•	•	•	•	R
9909016	ADJUSTABLE PLATE FOR HUMERUS AND ARM SURGERY	36	•	•	•	•	•	•	R
9910002	INSTRUMENT TRAY	17	•	•	•	•	•	•	C+R
9911005	FLOOR MOBILE FRAME	24	•	•	•	•	•	•	
9911012	FRAME FOR INSTRUMENT TRAY OR T.U.R. DRAINAGE SET	24	•	•	•	•	•	•	C+R
9911013	PERINEAL INSTRUMENT TRAY	24	•	•	•	•	•	•	C+R
9911202	UROLOGICAL PAN/T.U.R. DRAINAGE SET	24	•	•	•	•	•	•	C+R
9912001	ANKLE LEATHER CUFFS (PAIR)	45	•	•	•	•	•	•	C
9912002	ANKLE LEATHER CUFFS (PAIR)	45	•	•	•	•	•	•	C
9912003	ANKLE LEATHER CUFFS (PAIR)	45	•	•	•	•	•	•	C
9913002	SINGLE LEG SUPPORT	17	•	•	•	•	•	•	C+R
9914001	BODY/LEG STRAP	5	•	•	•	•	•	•	R
9914005	SINGLE LEG STRAP	5	•	•	•	•	•	•	R
9914008	BODY/LEG STRAP	5	•	•	•	•	•	•	R
9914009	BODY/LEG STRAP	5	•	•	•	•	•	•	R
9914011	SINGLE LEG STRAP	6	•	•	•	•	•	•	R
9914012	BODY / LEG STRAP WITH VELCRO CLOSURE	5	•	•	•	•	•	•	R
9914013	PADDED BODY STRAP	34	•	•	•	•	•	•	R

Compatibility

Code	Description	Page	VANTOII	VANTO II Wheels	ASSO	VITA	OPT 40/1	OPT 30/1	NOTE
9915001	LEATHER WRISTLET	6	•	•	•	•	•	•	R
9915002	WRIST SUPPORT	6	•	•	•	•	•	•	R
9915002P	WRIST SUPPORT	6	•	•	•	•			R
9915003	LEATHER WRISTLET	6	•	•	•	•	•	•	R
9915004	ARM PROTECTOR	6	•	•	•	•	•	•	R
9915005	LEATHER WRISTLET	6	•	•	•	•	•	•	R
9915006	ARM PROTECTOR	6	•	•	•	•	•	•	R
9916002	INFUSION ROD	7	•	•	•	•	•	•	R
9918003	TRACTION BOOT (SINGLE)	46	•	•	•	•	•	•	C
9918004	TRACTION BOOT (SINGLE)	46	•	•	•	•	•	•	C
9918005	TRACTION BOOT (SINGLE)	46	•	•	•	•	•	•	C
9918006	TRACTION BOOT (SINGLE)	46	•	•	•	•	•	•	C
9919001	ELONGATION BAR	45	•	•	•	•	•	•	R
9919003	ELONGATION BAR	45	•	•	•	•	•	•	R
9920001	ACCESSORIES' TROLLEY	19	•	•	•	•	•	•	
9920003	UNILATERAL STAINLESS STEEL ACCESSORIES TROLLEY	19	•	•	•	•	•	•	
9920006	BILATERAL STAINLESS STEEL ACCESSORIES TROLLEY	19	•	•	•	•	•	•	
9920022	TROLLEY FOR POSITIONING DEVICE FOR INTERVERTEBRAL DISC PROCEDURE	53	•		•	•			
9920022W	TROLLEY FOR POSITIONING DEVICE FOR INTERVERTEBRAL DISC PROCEDURE	53		•					
9920026	CUBE TROLLEY FOR DISMOUNTED TRACTION DEVICE	48	•	•	•	•			
9920028	CLEANING TROLLEY FOR COLUMN	18	•						
9920031	TROLLEY FOR POSITIONING DEVICE FOR INTERVERTEBRAL DISC PROCEDURE	53			•				
9920032	TROLLEY FOR POSITIONING DEVICE FOR INTERVERTEBRAL DISC PROCEDURE	53	•		•	•			
9920032W	TROLLEY FOR POSITIONING DEVICE FOR INTERVERTEBRAL DISC PROCEDURE	53		•					
9920051	COMPONENT STAND	19	•	•	•	•			
99205500	CUBE TROLLEY FOR DISMOUNTED CARBON FIBRE TRACTION DEVICE	48	•	•	•	•			
9920070	TROLLEY FOR MOUNTED LOWER LIMBS TRACTION DEVICE	48	•		•	•			
9920070S	TROLLEYS ADAPTER FOR LOWER LIMBS TRACTION DEVICE	48	•		•	•			C
9920070W	TROLLEY FOR MOUNTED LOWER LIMBS TRACTION DEVICE	48		•					
9920071	TROLLEY FOR MOUNTED LOWER LIMBS TRACTION DEVICE	48	•		•	•			
9920071W	TROLLEY FOR MOUNTED LOWER LIMBS TRACTION DEVICE	48		•					
9921002	CUSHION FOR DISC SURGERY	53	•	•	•	•	•	•	
9921009	SQUARE-SHAPED HEAD REST	52	•	•	•	•	•	•	
9921010	SQUARE-SHAPED HEAD REST	52	•	•	•	•	•	•	
9921015	TUNNEL CUSHION	16	•	•	•	•	•	•	
9921016	WEDGE-SHAPED PAD	16	•	•	•	•	•	•	
9921018	SEMICIRCULAR CUSHION	16	•	•	•	•	•	•	
9922002	X-RAY CASSETTE HOLDER	28	•	•	•	•	•	•	R
9923020	RIGID STIRRUP HOLDER DEVICES	47	•	•	•	•	•	•	C
9923045	REMOVABLE TRACTION STANDING DEVICE LEG/BAR	46	•	•	•	•			C

Compatibility									
Code	Description	Page	VANTOII	VANTO II Wheels	ASSO	VITA	OPT 40/1	OPT 30/1	NOTE
9923046	LOWER LIMBS TRACTION DEVICE	41					•	•	L
9923047	SINGLE TRACTION ARM	42					•	•	C+L
9923048	TROLLEY FOR MOUNTED TRACTION DEVICE	48					•	•	
992304900	FIXED SCREW TENSION DEVICE	43	•	•	•	•	•	•	C
9923052	LOWER LIMBS TRACTION DEVICE	41	•	•	•	•			L
9923052SA	CUSHIONS FOR LOWER LIMBS TRACTION DEVICE	41	•	•	•	•			C
9923052VA	CUSHIONS FOR LOWER LIMBS TRACTION DEVICE	41	•	•	•	•			C
9923053	SINGLE TRACTION ARM	42	•	•	•	•			C+L
9923057	PELVIS PLASTER DEVICE	41	•	•	•	•			C+L
9923062	STIRRUP HOLDER DEVICE	47	•	•	•	•	•	•	C
9923063	CERVICAL RACHIS TRACTION DEVICE	53	•	•	•	•	•	•	C+H
9923064	PAIR OF TRACTION LEG SUPPORTS	44					•	•	C+L
9923067	PAIR OF TRACTION LEG SUPPORTS	44	•	•	•	•			C+L
9923067SA	CUSHIONS FOR PAIR OF TRACTION LEG SUPPORTS	44	•	•	•	•			C
9923067VA	CUSHIONS FOR PAIR OF TRACTION LEG SUPPORTS	44	•	•	•	•			C
9923069	CARBON FIBRE HIP PROTHESIS DEVICE	40	•	•	•				L+C
9923069SA	CUSHIONS FOR CARBON FIBRE HIP PROTHESIS DEVICE	40	•	•	•	•			C
9923069VA	CUSHIONS FOR CARBON FIBRE HIP PROTHESIS DEVICE	40	•	•	•	•			C
9923071	PELVIC - PODALIC ACCESSORY	40	•	•	•	•			L
9923074	REMOVABLE TRACTION STANDING DEVICE	46	•	•	•	•			C
992307700	SCREW TENSION DEVICE WITH HORIZONTAL ADJUSTMENT	43	•	•	•	•	•	•	C
9923078	COUNTERTRACTION DEVICE FOR BARIATRIC SURGERY	47	•	•	•	•			L
9923079	PELVIC - PODALIC ACCESSORY	40					•	•	L
992308500	LEG SUPPORT FOR TRACTION DEVICE	45	•	•	•	•			
9923089	LOWER LIMBS TRACTION DEVICE WITH CARBON PELVIS SUPPORT	42	•	•	•	•			C+L
9923089SA	CUSHIONS SET FOR LOWER LIMBS TRACTION DEVICE WITH CARBON PELVIS SUPPORT	42	•	•	•	•			C
9923089VA	CUSHIONS SET FOR LOWER LIMBS TRACTION DEVICE WITH CARBON PELVIS SUPPORT	42	•	•	•	•			C
9923090	360° LOWER LIMBS TRACTION DEVICE WITH CARBON PELVIS SUPPORT (MIS)	42	•	•	•	•			C+L
9923090SA	CUSHIONS SET FOR LOWER 360° LOWER LIMBS TRACTION DEVICE WITH CARBON PELVIS SUPPORT (MIS)	43	•	•	•	•			C
9923090VA	CUSHIONS SET FOR LOWER 360° LOWER LIMBS TRACTION DEVICE WITH CARBON PELVIS SUPPORT (MIS)	43	•	•	•	•			C
992309100	SCREW TENSION DEVICE WITH LONGITUDINAL ADJUSTMENT	44	•	•	•	•	•	•	C
9923092	LEG SUPPORT PLATE WITH CLAMP	46	•	•	•	•			C
9923093	RADIOLUCENT DEVICE FOR TRACTION MAINTENANCE	43	•	•					C
9924021	PATIENT HANDLE FOR GYNAECOLOGY (SINGLE)	25	•	•	•	•	•	•	R
9924024	SUPPORTING BAR FOR HEAD RESTS	33-50	•	•	•	•	•	•	C+H
9924026	L-SHAPED COUNTER TRACTION AND PELVIS SUPPORT POST	46	•	•	•	•	•	•	C+L
9924027	TIBIA NAILING DEVICE	47	•	•	•	•	•	•	C+L
9925010	SQUARE SECTION ADAPTER FOR HEAD REST	50						•	C+H

Compatibility

Code	Description	Page	VANTOII	VANTO II Wheels	ASSO	VITA	OPT 40/1	OPT 30/1	NOTE
9925016	ADAPTER FOR ALLOY SKULL CLAMP	54						•	C+H
9925024	SQUARE SECTION ADAPTER FOR HEAD REST	50					•		C+H
9925025	ADAPTER FOR ALLOY SKULL CLAMP	54					•		C+H
9925052	ADAPTER FOR HEAD REST	50	•	•	•	•			C+H
9925053	ADAPTER FOR ALLOY SKULL CLAMP	54	•	•	•	•			C+H
9925054	ADAPTER FOR ALLOY SKULL CLAMP	54	•	•	•	•			C+H
9928003	RAILING LATERAL EDGE (SINGLE)	9	•	•	•	•	•	•	R
9929003	FRAME FOR X-RAY CASSETTES	28	•	•	•	•	•	•	C
9930033	CUSHION FOR DISC SURGERY	53	•	•	•	•	•	•	
9933015	PLATE WITH SIDE RAILS FOR CARBON FIBRE SECTIONS	29	•	•	•	•	•	•	
9933023	PLATE WITH SIDE RAIL FOR VANTO/VANTO II VASCULAR TABLE TOP AND XY TABLE TOP	29	•	•					
C3101611	ALLOY SKULL CLAMP	54	•	•	•	•	•	•	C+H
C3101613	ADULT HORSESHOE HEADREST	55	•	•	•	•	•	•	C+H
C3101614	ADULT REUSABLE SKULL PIN	55	•	•	•	•	•	•	C+H
C3101615	CHILD REUSABLE SKULL PIN	55	•	•	•	•	•	•	C+H
C3102321	ULTRA BASE UNIT	55	•	•	•	•	•	•	C+H
C3102323	SWIVEL ADAPTOR	56	•	•	•	•	•	•	C+H
C3102610	PAEDIATRIC HORSESHOE REST	56	•	•	•	•	•	•	H
C3102912	OPERATING TABLE PAD	60	•	•	•	•	•	•	
C3102981	OPERATING TABLE PAD	60	•	•	•	•	•	•	
C3102990	ARMBOARD PAD	60	•	•	•	•	•	•	
C3103049	OPERATING TABLE PAD	60	•	•	•	•	•	•	
C3103057	OPERATING TABLE PAD WITH PERINEAL CUT	60	•	•	•	•	•	•	
C3103060	OPERATING TABLE PAD	60	•	•	•	•	•	•	
C3103127	CLOSED HEAD RING	58	•	•	•	•	•	•	
C3103128	OPEN HEAD RING	58	•	•	•	•	•	•	
C3103130	CHEST ROLL	58	•	•	•	•	•	•	
C3103139	CLOSED HEAD RING	58	•	•	•	•	•	•	
C3103140	PRONE HEAD REST	58	•	•	•	•	•	•	
C3103143	ARMBOARD PAD	59	•	•	•	•	•	•	
C3103144	UNIVERSAL PATIENT POSITIONER	59	•	•	•	•	•	•	
C3103145	UNIVERSAL PATIENT POSITIONER	59	•	•	•	•	•	•	
C3103158	OPERATING TABLE PAD	60	•	•	•	•	•	•	
C3103159	OPEN HEAD RING	58	•	•	•	•	•	•	
C3103160	PAIR OF HEEL GEL SUPPORT	58	•	•	•	•	•	•	
C3103161	CHEST ROLL	58	•	•	•	•	•	•	
C3103162	ARMBOARD PAD	59	•	•	•	•	•	•	
C3103178	CLOSED HEAD RING	58	•	•	•	•	•	•	
C3103179	CONTOURED HEADREST	59	•	•	•	•	•	•	
C3103180	OPEN HEAD RING	58	•	•	•	•	•	•	
C3103181	PRONE HEAD REST	58	•	•	•	•	•	•	
C3103182	HEAD PAD	59	•	•	•	•	•	•	
C3103183	OPERATING TABLE PAD	60	•	•	•	•	•	•	
C3103184	OPERATING TABLE PAD	60	•	•	•	•	•	•	

Compatibility									
Code	Description	Page	VANTOII	VANTO II Wheels	ASSO	VITA	OPT 40/1	OPT 30/1	NOTE
C3103185	OPERATING TABLE PAD	60	•	•	•	•	•	•	
C3103186	OPERATING TABLE PAD	60	•	•	•	•	•	•	
C3103188	WILSON FRAME PAD	59	•	•	•	•	•	•	
C3103194	BOOT STIRRUP PAD	60	•	•	•	•	•	•	
C3103197	CHEST ROLL	58	•	•	•	•	•	•	
C3103375	UNIVERSAL PATIENT POSITIONER	59	•	•	•	•	•	•	
C3103376	UNIVERSAL PATIENT POSITIONER	59	•	•	•	•	•	•	
C3103377	GOEPEL KNEE CRUTCH PAD	60	•	•	•	•	•	•	
C3103388	PAIR OF HEEL GEL SUPPORTS	58	•	•	•	•	•	•	
C3103728	CARBON FIBRE RADIOLOGIC HEAD REST SYSTEM	56	•	•	•	•	•	•	R
C3103740	CHEST ROLL	58	•	•	•	•	•	•	
C3103746	ULTRA BASE UNIT	55	•	•	•	•	•	•	C+H
C3103747	ALLOY SKULL CLAMP	54	•	•	•	•	•	•	C+H
C3103748	SWIVEL ADAPTOR	56	•	•	•	•	•	•	C+H
C3103749	ADULT REUSABLE SKULL PIN	55	•	•	•	•	•	•	C+H
C3103750	CHILD REUSABLE SKULL PIN	55	•	•	•	•	•	•	C+H
C3103751	CARBON FIBRE RADIOLOGIC HEAD REST SYSTEM	55	•	•	•	•	•	•	R
C3103785	ADULT HORSESHOE HEADREST	55	•	•	•	•	•	•	C+H
C3103786	VACUUM MATTRESS	10	•	•	•	•	•	•	
C3103806	VACUUM MATTRESS	10	•	•	•	•	•	•	
C3103813	VACUUM MATTRESS	10	•	•	•	•	•	•	
C3103821	PAEDIATRIC HORSESHOE REST	56	•	•	•	•	•	•	H
C3103848	HEATING MATTRES	10	•	•	•	•	•	•	
C3103849	SINGLE COVER FOR HEATING MATTRESS	10	•	•	•	•	•	•	
C3103859	LIFT PUMP FOR VACUUM MATTRESS	12	•	•	•	•	•	•	
R050101000	STIRRUPS CART	23	•	•	•	•	•	•	C
R050103000	DIRECT PLACEMENT STIRRUP (PAIR)	22	•	•	•	•	•	•	R
R050105000	DIRECT PLACEMENT STIRRUP (PAIR)	22	•	•	•	•	•	•	R
R050108100	DIRECT PLACEMENT STIRRUP (PAIR)	23	•	•	•	•	•	•	R
R050204610	CLAMP FOR DIRECT PLACEMENT STIRRUP	23	•	•	•	•	•	•	C+R

OPT SurgiSystems S.r.l.

TKB Group, Tokyo, Japan

Via Cesare Battisti, 17 - 38060 Calliano (TN) - Italy
Phone + 39 0464834336 - Fax + 39 0464 835142
www.opt-ita.com

Distributed by:



OPT SurgiSystems S.r.l. reserves the right to make technical changes without prior notice.