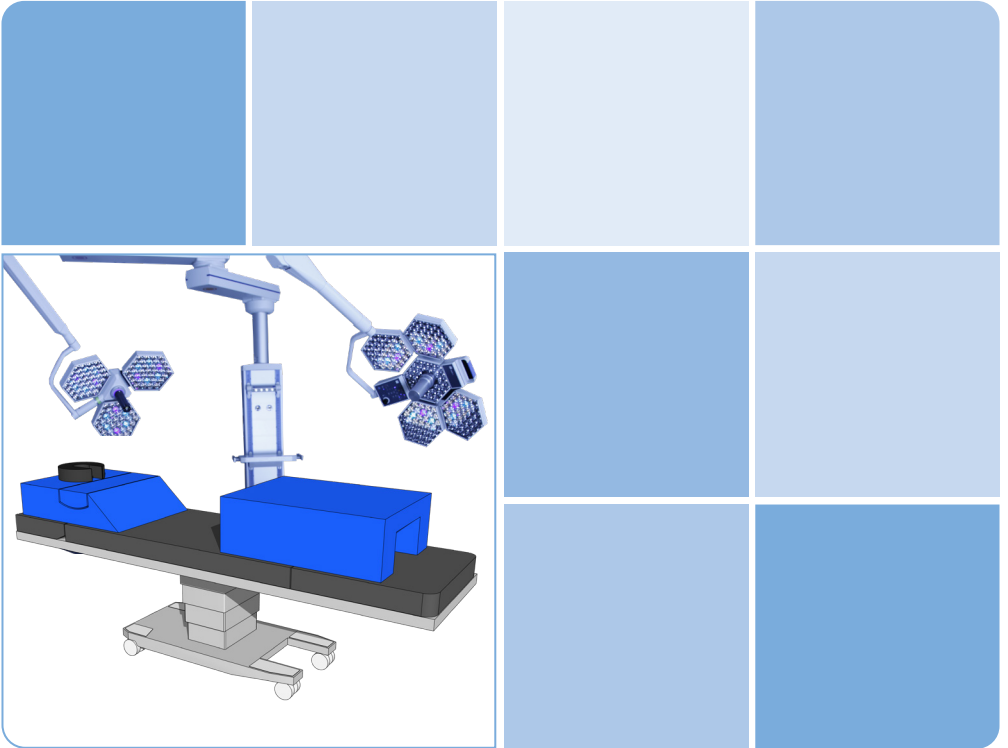


# ESWELL positioning pads

---



**Simonsen & Weel**

---

**ESWELL**

---

By Simonsen & Weel established in 1817

# ESWELL positioning pads

## About ESWELL

Our ESWELL mattresses and positioning pads for the operating room are developed in collaboration with leading experts within the health care sector in Scandinavia and other countries.

Our ESWELL products are designed to improve the positioning of the patient during surgery, and at the same time they reduce the risk of developing pressure injuries.

Our ESWELL products increase the pressure distribution, and thereby improve circulation of the blood. They secure comfortable positioning of the patient even in awkward positions. The pads are easy to use and provide help when re-positioning.

The first ESWELL products were introduced in 2006, and today they are used in many hospitals in around 50 countries throughout the world.

## The production of ESWELL

The ESWELL production site uses the most recent techniques and production methods at its plants in Denmark and Poland. Every day, more than 1,500 m<sup>3</sup> foam is produced at one of Europe's largest foam machines placed in Denmark. The factory has more than 400 employees and a history of foam manufacturing that goes more than 40 years back.

All products are subject to a quality check, where two specialized employees control that all specifications and characteristics of the product comply with the standards. The factory is ISO 9001:2015 certified.

## The Foam

All our ESWELL products are designed to ensure optimal positioning of the patient and at the same time reducing the risk of developing pressure injuries. This is ensured by combining up to seven different types of viscoelastic and HR foams. Some ESWELL products are designed with up to three different foam types.

Viscoelastic foam is a high-tech material originally developed by NASA. It absorbs body heat and molds itself gently to the body, and thus gives the body improved support during surgery. The pressure distributing properties of the foam provide unique patient comfort and at the same time it ensures a correct anatomical position for the surgeon.

## Cover

The cover is a waterproof and breathing Decu-Tex© material, which mainly consists of polyurethane. For optimal hygiene all covers are fully-welded and are fitted with a water-resistant zipper, which makes it possible to remove and wash (up to 95°C). The zipper is protected by the cover in order to reduce irritation of the skin and to prevent liquids entering the foam.

## Colours

The ESWELL products are manufactured in several different colours. Some hospitals use colours to classify and categorize the pads for different positionings, and other hospitals use colours to identify which department they belong to.



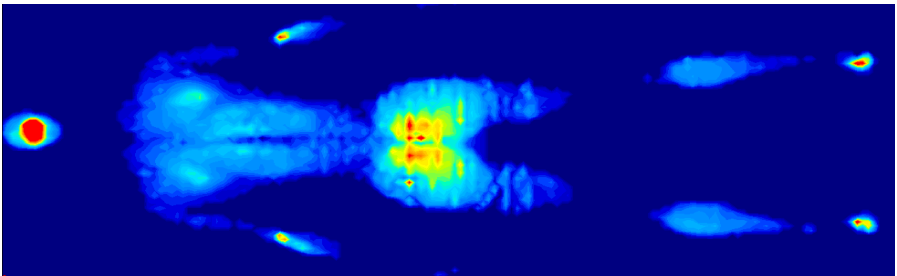
## Environment & Allergy Friendly

None of the ESWELL products are allergenic or unhealthy as they do not contain PVC, cadmium, phthalates or latex.

## Testing of ESWELL positioning pads

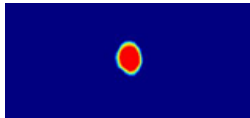
In order to ensure that our products fulfil the high requirements of our customers, we are testing all products in-house before putting them on the market.

For our positioning pads, we test them with a specific number of test persons of different age, gender, height and weight in order to get a broad picture of the capability of the pad.

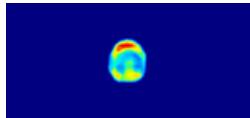


Afterwards, we do a statistical analysis of the outcome in order to see if the results are statistically significant.

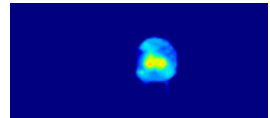
For some of our pads, we additionally conduct a comparison with other foam products as well as with various gel products on the market. Here, we directly compare the pressure distributing capabilities of the two pads.



No head pad



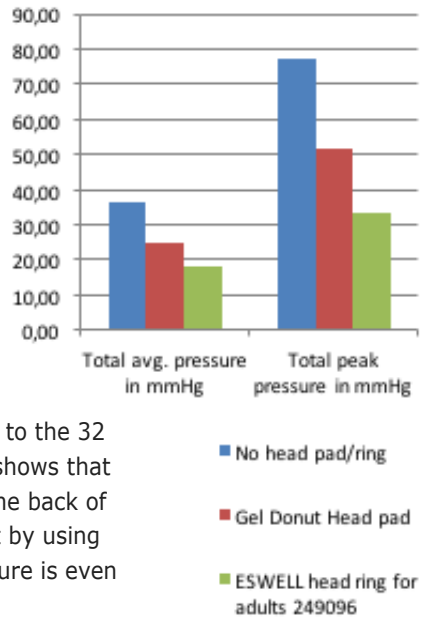
Gel donut head pad



ESWELL head ring  
for adults 249096

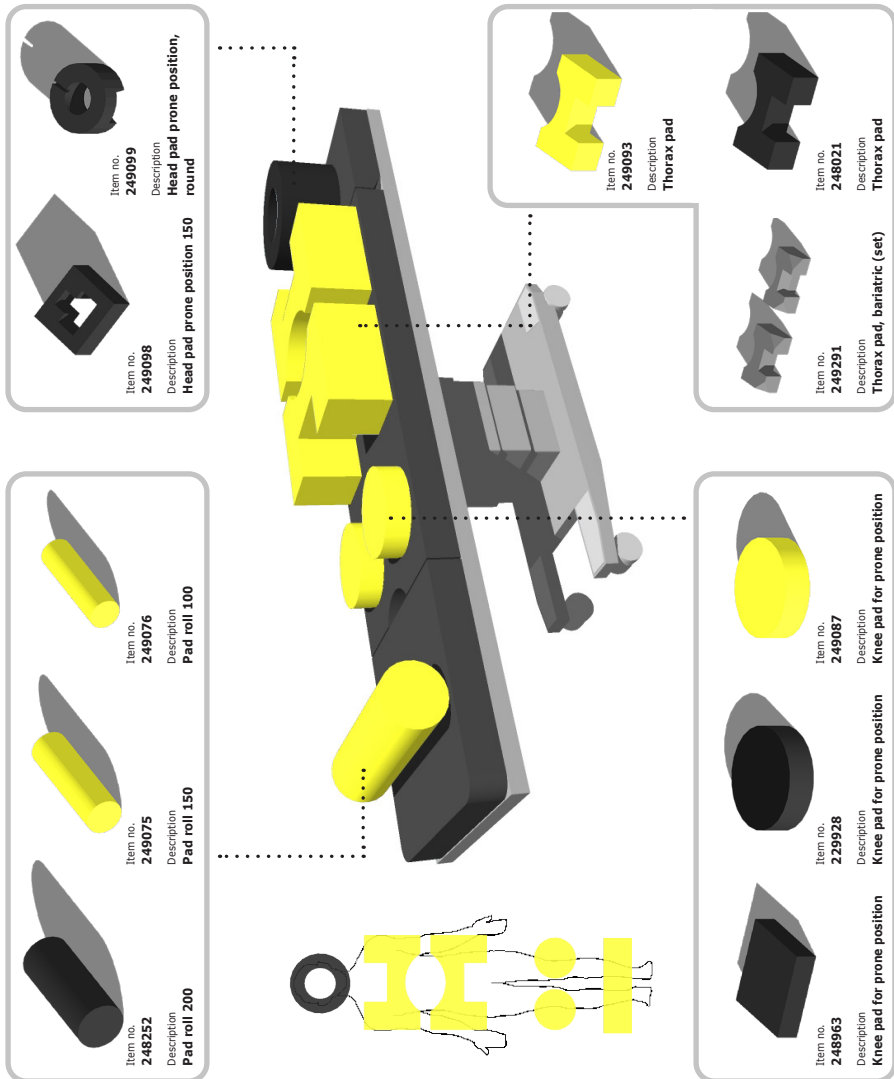
In this example, we are comparing our ESWELL head ring for adults (art. no. 249096) with a similar gel head ring and as a reference with no use of a head pad at all.

As shown by the graph, the maximum pressure on the back of the head experienced by a test person was close to 80 mmHg. By using a gel head pad, the maximum pressure was reduced to approx. 51 mmHg, which is still beyond the 32 mmHg we use as reference, as this is the pressure level where the capillaries close off\*. However, when using the ESWELL head ring for adults, the maximum pressure measured was only approx. 33 mmHg, which is very close to the 32 mmHg we use as reference. This example shows that by using a gel head ring, the pressure on the back of the head is reduced, but it also shows, that by using our ESWELL head ring for adults, the pressure is even further reduced.

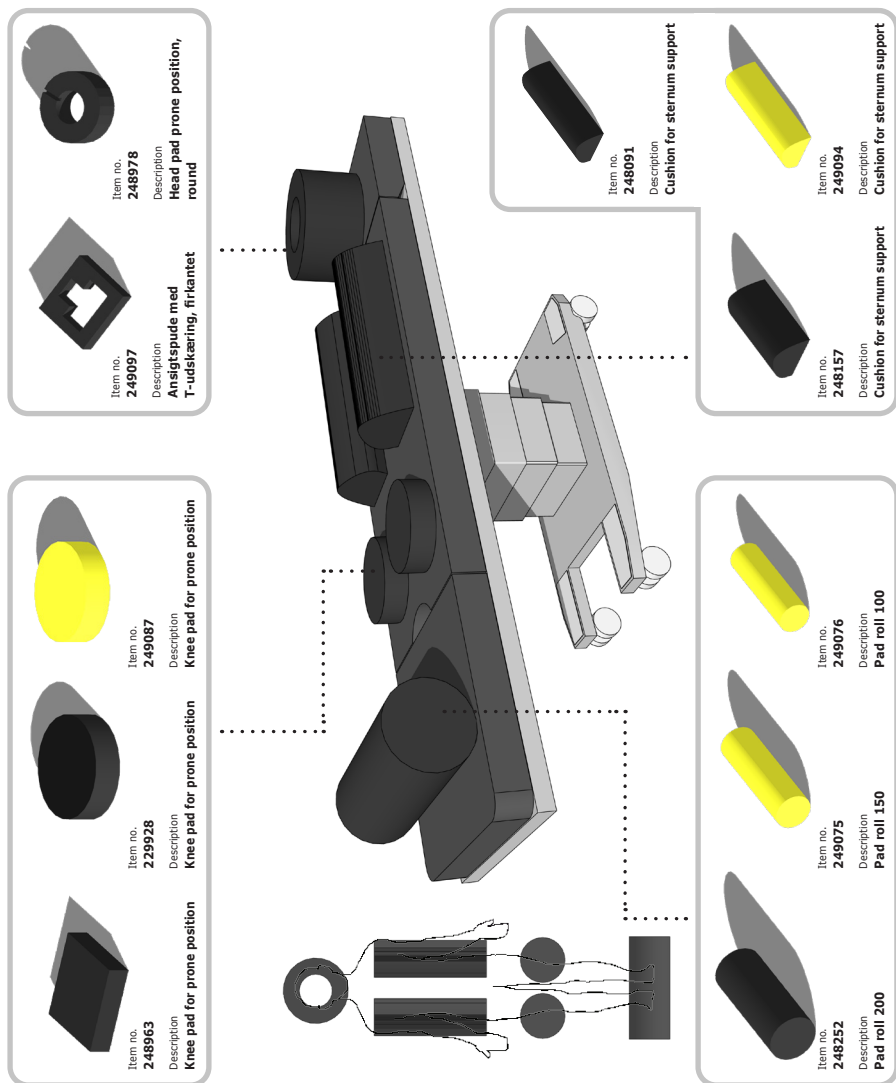


\* Eugene M. Landis et al., Micro-injection studies of capillary blood pressure in human skin. Heart, 15(15):209-228, 1930).






# Prone positioning

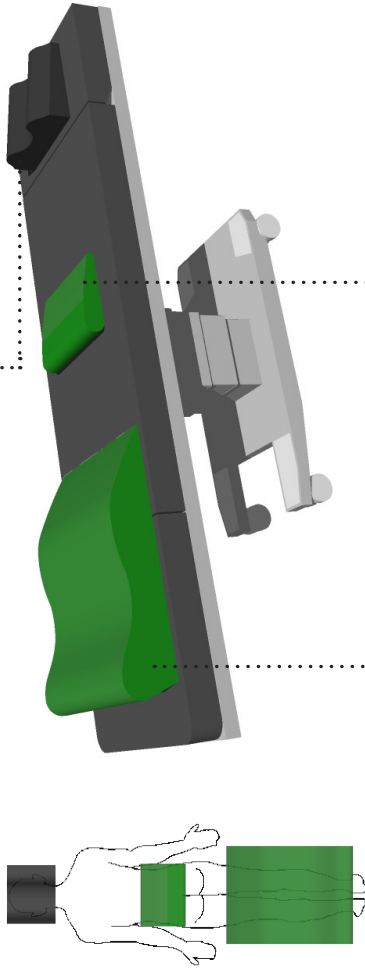





# Prone positioning





# Supine positioning

|                                                                                             |                                                                                     |                                                                                   |                                                                                   |                                                                                   |
|---------------------------------------------------------------------------------------------|-------------------------------------------------------------------------------------|-----------------------------------------------------------------------------------|-----------------------------------------------------------------------------------|-----------------------------------------------------------------------------------|
|          |  |  |  |  |
| Item no.<br><b>229376</b><br>Description<br><b>Pad for head positioning,<br/>extra wide</b> | Item no.<br><b>248906</b><br>Description<br><b>Pad for head konkav</b>              | Item no.<br><b>248906</b><br>Description<br><b>Head ring for adults</b>           | Item no.<br><b>248246</b><br>Description<br><b>Pad for head positioning</b>       | Item no.<br><b>249095</b><br>Description<br><b>Pad for head positioning</b>       |







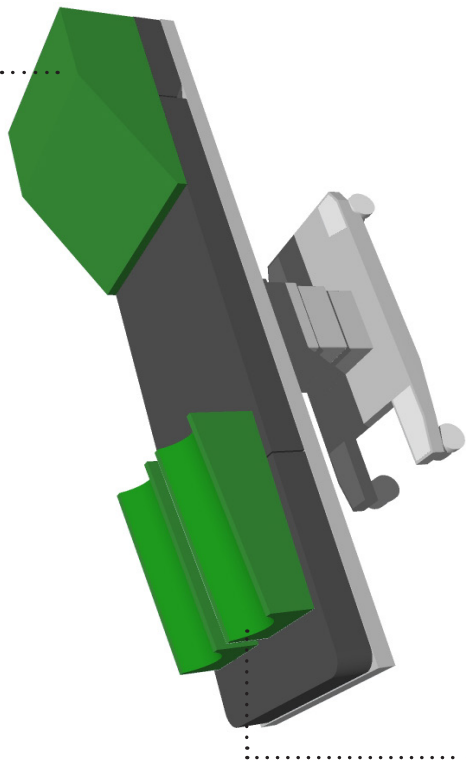
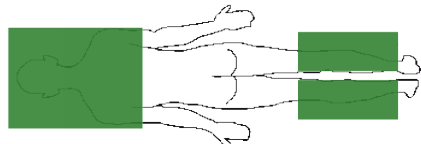
|                                                                                     |                                                                                     |                                                                                       |
|-------------------------------------------------------------------------------------|-------------------------------------------------------------------------------------|---------------------------------------------------------------------------------------|
|  |  |      |
| Item no.<br><b>249081</b><br>Description<br><b>Leg positioning pad</b>              | Item no.<br><b>248049</b><br>Description<br><b>Leg positioning pad, long</b>        | Item no.<br><b>249151</b><br>Description<br><b>Leg positioning pad,<br/>bariatric</b> |




|                                                                                        |                                                                                   |
|----------------------------------------------------------------------------------------|-----------------------------------------------------------------------------------|
|       |  |
| Item no.<br><b>249147</b><br>Description<br><b>Pad for lumbar spine,<br/>bariatric</b> | Item no.<br><b>249072</b><br>Description<br><b>Pad for lumbar spine</b>           |



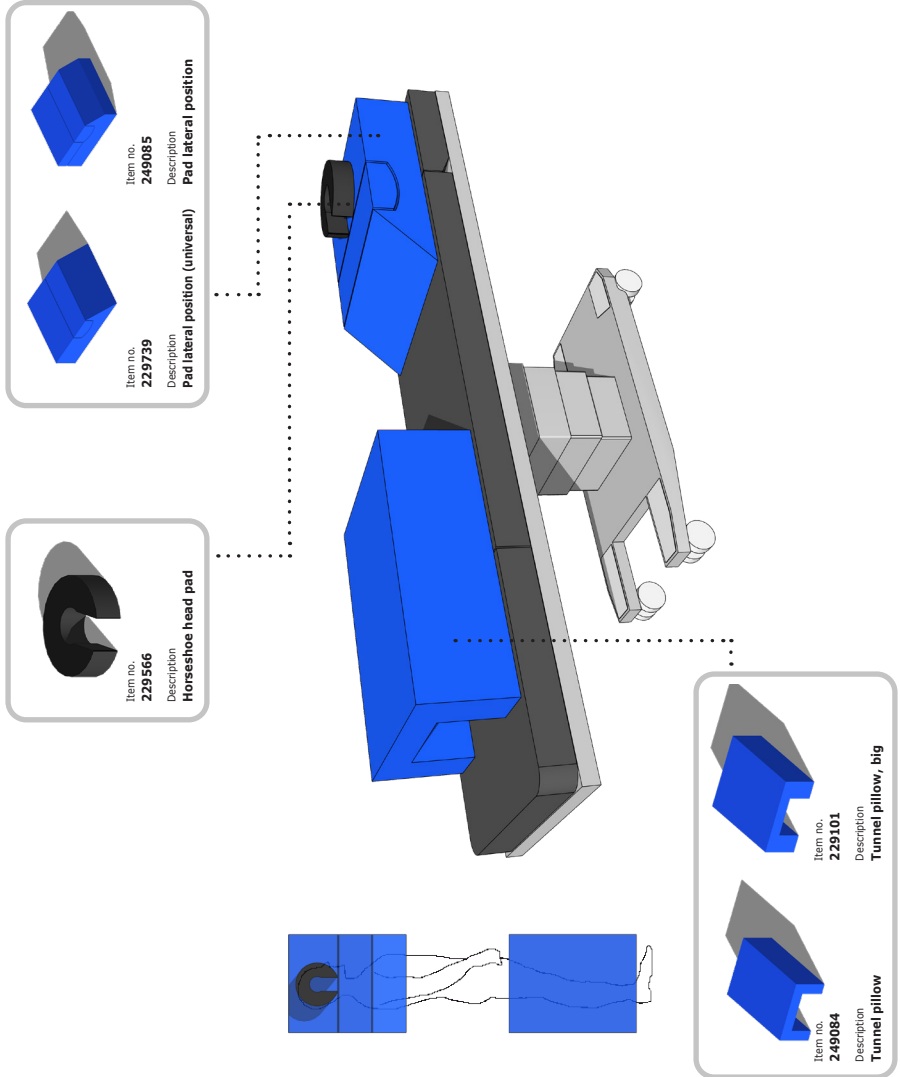
# Supine positioning

|                                                                                    |                           |                                                            |
|------------------------------------------------------------------------------------|---------------------------|------------------------------------------------------------|
|  | Item no.<br><b>249154</b> | Description<br><b>Pad supine position, short bariatric</b> |
|   | Item no.<br><b>249152</b> | Description<br><b>Pad supine position, long bariatric</b>  |
|   | Item no.<br><b>249083</b> | Description<br><b>Pad supine position, long, short</b>     |
|   | Item no.<br><b>249082</b> | Description<br><b>Pad supine position, long</b>            |




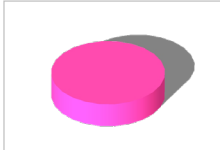
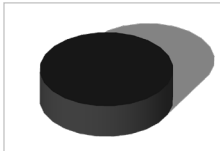
|                                                                                     |                           |                                                   |
|-------------------------------------------------------------------------------------|---------------------------|---------------------------------------------------|
|  | Item no.<br><b>229903</b> | Description<br><b>Leg positioning pad, 2-part</b> |
|  | Item no.<br><b>249077</b> | Description<br><b>Leg and heel pad</b>            |
|    | Item no.<br><b>249149</b> | Description<br><b>Leg and heel pad, bariatric</b> |

# Lateral positioning



# Head positioning

## Head rings for supine position

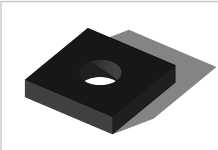
| Item no. | Description               | Colour | Size D x H in mm |                                                                                    |
|----------|---------------------------|--------|------------------|------------------------------------------------------------------------------------|
| 249090   | Head ring for paediatrics | Pink   | 90 x 20          |  |
| 249091   | Head ring for children    | Pink   | 130 x 30         |  |
| 249096   | Head ring for adults      | Black  | 220 x 60         |  |

## Head pads for lateral position

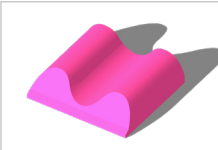
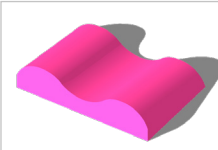
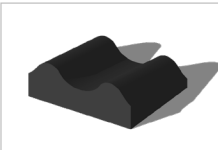
| Item no. | Description                     | Colour | Size D x H in mm |                                                                                      |
|----------|---------------------------------|--------|------------------|--------------------------------------------------------------------------------------|
| 229094   | Horseshoe head pad for children | Pink   | 130 x 30         |  |
| 229566   | Horseshoe head pad              | Black  | 220 x 60         |  |

# Head positioning

## Head pads for lateral position

| Item no. | Description  | Colour | Size L x W x H<br>in mm |                                                                                    |
|----------|--------------|--------|-------------------------|------------------------------------------------------------------------------------|
| 229755   | Ear head pad | Black  | 250 x 250<br>x 50       |  |

## Head pads for supine position

| Item no. | Description                              | Colour | Size L x W x H<br>in mm |                                                                                      |
|----------|------------------------------------------|--------|-------------------------|--------------------------------------------------------------------------------------|
| 229117   | Pad for head positioning                 | Pink   | 200 x 220<br>x 50/10    |    |
| 249089   | Pad for head positioning,<br>paediatrics | Pink   | 300 x 200<br>x 70/40    |   |
| 249095   | Pad for head positioning                 | Black  | 250 x 300<br>x 110/70   |  |

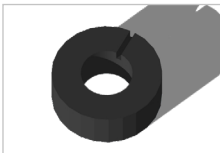
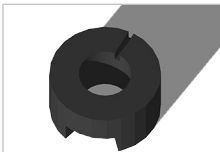
# Head positioning



## Head pads for supine position

| Item no. | Description                             | Colour | Size L x W x H<br>in mm |                                                                                    |
|----------|-----------------------------------------|--------|-------------------------|------------------------------------------------------------------------------------|
| 248906   | Pad for head konkav                     | Black  | 260 x 260<br>x 110      |  |
| 248246   | Pad for head positioning                | Black  | 319 x 290<br>x 108/84   |  |
| 229376   | Pad for head positioning,<br>extra wide | Black  | 319 x 500<br>x 108/84   |  |

# Head positioning

## Head pads for prone position

| Item no. | Description                       | Colour | Size D x H<br>in mm |                                                                                    |
|----------|-----------------------------------|--------|---------------------|------------------------------------------------------------------------------------|
| 248978   | Head pad prone position,<br>round | Black  | 320 x 120           |  |
| 249099   | Head pad prone position,<br>round | Black  | 320 x 170           |  |

| Item no. | Description                 | Colour | Size L x W x H<br>in mm |                                                                                      |
|----------|-----------------------------|--------|-------------------------|--------------------------------------------------------------------------------------|
| 249097   | Head pad prone position 70  | Black  | 250 x 230<br>x 70       |   |
| 249098   | Head pad prone position 150 | Black  | 280 x 250<br>x 150      |  |

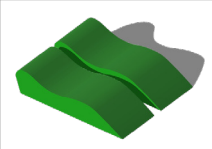
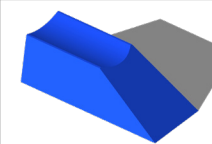
# Leg positioning

## Leg pads for supine/prone position

| Item no. | Description                          | Colour | Size L x W x H in mm |                                                                                     |
|----------|--------------------------------------|--------|----------------------|-------------------------------------------------------------------------------------|
| 229100   | Leg positioning pad, children, short | Pink   | 400 x 500 x 70/60    |    |
| 229083   | Leg positioning pad, children, long  | Pink   | 500 x 500 x 100/80   |    |
| 249081   | Leg positioning pad                  | Green  | 650 x 500 x 140/109  |    |
| 248049   | Leg positioning pad, long            | Black  | 750 x 500 x 140/109  |   |
| 249151   | Leg positioning pad, bariatric       | Grey   | 650 x 500 x 140/109  |  |

# Leg positioning

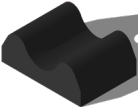
## Leg pads for supine position

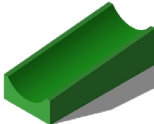
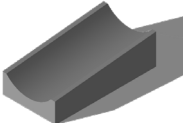
| Item no. | Description                 | Colour | Size L x W x H in mm |                                                                                    |
|----------|-----------------------------|--------|----------------------|------------------------------------------------------------------------------------|
| 229903   | Leg positioning pad, 2-part | Green  | 650 x 250 x 140/109  |  |
| Item no. | Description                 | Colour | Size L x W x H in mm |                                                                                    |
| 248982   | Leg elevation pad           | Blue   | 750 x 310 x 240      |  |



# Leg positioning

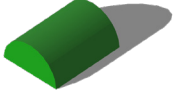
## Heel pads for supine position

| Item no. | Description            | Colour | Size L x W x H<br>in mm |                                                                                   |
|----------|------------------------|--------|-------------------------|-----------------------------------------------------------------------------------|
| 248461   | Heel pad single, short | Black  | 190 x 270<br>x 90/40    |  |

| Item no. | Description                      | Colour | Size L x W x H<br>in mm |                                                                                      |
|----------|----------------------------------|--------|-------------------------|--------------------------------------------------------------------------------------|
| 249078   | Leg and heel pad,<br>paediatrics | Pink   | 380 x 180<br>x 110/70   |     |
| 249077   | Leg and heel pad                 | Green  | 500 x 220<br>x 150/100  |     |
| 249149   | Leg and heel pad,<br>bariatric   | Grey   | 500 x 260<br>x 150/100  |  |

# Leg positioning

## Leg pads for supine position

| Item no. | Description                             | Colour | Size L x W x H in mm |                                                                                      |
|----------|-----------------------------------------|--------|----------------------|--------------------------------------------------------------------------------------|
| 249092   | Pad semi circular shaped, paediatrics   | Pink   | 300 x 50 x 50        |     |
| 249074   | Pad semi circular shaped 250            | Green  | 250 x 200 x 100      |     |
| 249073   | Pad semi circular shaped 500            | Green  | 500 x 200 x 100      |    |
| 249153   | Pad semi circular shaped 250, bariatric | Grey   | 250 x 200 x 110      |   |
| 249148   | Pad semi circular shaped 500, bariatric | Grey   | 500 x 200 x 110      |  |

# Leg positioning

## Pad rolls for prone position

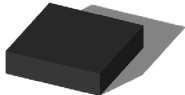
| Item no. | Description  | Colour | Size D x H<br>in mm |                                                                                    |
|----------|--------------|--------|---------------------|------------------------------------------------------------------------------------|
| 249076   | Pad roll 100 | Yellow | 100 x 350           |   |
| 249075   | Pad roll 150 | Yellow | 150 x 500           |  |
| 248252   | Pad roll 200 | Black  | 200 x 500           |  |

# Prone positioning

## Knee pads

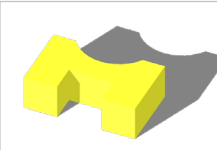

| Item no. | Description                 | Colour | Size D x H<br>in mm |                                                                                   |
|----------|-----------------------------|--------|---------------------|-----------------------------------------------------------------------------------|
| 249087   | Knee pad for prone position | Yellow | 220 x 60            |  |
| 229928   | Knee pad for prone position | Black  | 220 x 60            |  |

| Item no. | Description                            | Colour | Size D x H<br>in mm |                                                                                   |
|----------|----------------------------------------|--------|---------------------|-----------------------------------------------------------------------------------|
| 229271   | Knee pad for prone position, bariatric | Grey   | 250 x 70            |  |

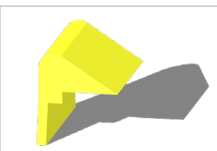
| Item no. | Description                 | Colour | Size L x W x H<br>in mm |                                                                                      |
|----------|-----------------------------|--------|-------------------------|--------------------------------------------------------------------------------------|
| 248963   | Knee pad for prone position | Black  | 200 x 200<br>x 50       |  |

# Prone positioning

## Thorax/abdominal pads

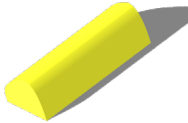
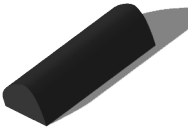
| Item no. | Description                 | Colour | Size L x W x H<br>in mm                  |                                                                                    |
|----------|-----------------------------|--------|------------------------------------------|------------------------------------------------------------------------------------|
| 249093   | Thorax pad                  | Yellow | 300 x 500<br>x 160                       |  |
| 248021   | Thorax pad                  | Black  | 300 x 500<br>x 160                       |  |
| 249291   | Thorax pad, bariatric (set) | Grey   | 250 x 500<br>x 160<br>300 x 500<br>x 160 |  |

## Jack Knife pads

| Item no. | Description    | Colour | Size L x W x H<br>in mm   |                                                                                      |
|----------|----------------|--------|---------------------------|--------------------------------------------------------------------------------------|
| 249086   | Jack Knife pad | Yellow | 330 x<br>620/540<br>x 380 |  |

# Prone positioning

## Thorax/abdominal pads

| Item no. | Description                              | Colour | Size L x W x H in mm |                                                                                      |
|----------|------------------------------------------|--------|----------------------|--------------------------------------------------------------------------------------|
| 249088   | Cushion for sternum support, paediatrics | Pink   | 250 x 90 x 60        |     |
| 229086   | Cushion for sternum support, children    | Pink   | 300 x 130 x 90       |    |
| 248157   | Cushion for sternum support, short       | Black  | 350 x 170 x 120      |    |
| 249094   | Cushion for sternum support              | Yellow | 550 x 170 x 120      |   |
| 248091   | Cushion for sternum support              | Black  | 550 x 170 x 120      |  |

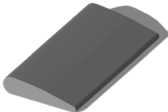
# Supine positioning

## Pads for intubation


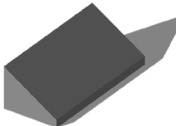
| Item no. | Description                          | Colour | Size L x W x H in mm |                                                                                      |
|----------|--------------------------------------|--------|----------------------|--------------------------------------------------------------------------------------|
| 249083   | Pad supine position, short           | Green  | 650 x 550 x 210/30   |     |
| 249154   | Pad supine position, short bariatric | Grey   | 650 x 550 x 210/30   |     |
| 249082   | Pad supine position, long            | Green  | 750 x 550 x 250/30   |    |
| 249152   | Pad supine position, long bariatric  | Grey   | 750 x 550 x 250/30   |   |
| Item no. | Description                          | Colour | Size L x W x H in mm |                                                                                      |
| 229544   | Hacks pad                            | Black  | 345 x 240 x 80       |  |

# Supine positioning

## Lumbar pads for supine position

| Item no. | Description                     | Colour | Size L x W x H in mm |                                                                                   |
|----------|---------------------------------|--------|----------------------|-----------------------------------------------------------------------------------|
| 249072   | Pad for lumbar spine            | Green  | 230 x 320 x 55       |  |
| 249147   | Pad for lumbar spine, bariatric | Grey   | 230 x 450 x 55       |  |

## Wedges

| Item no. | Description        | Colour | Size L x W x H in mm |                                                                                      |
|----------|--------------------|--------|----------------------|--------------------------------------------------------------------------------------|
| 249079   | Wedge, paediatrics | Pink   | 280 x 150 x 60       |   |
| 249080   | Wedge, flat        | Green  | 350 x 150 x 100      |   |
| 249150   | Wedge, bariatric   | Grey   | 400 x 170 x 130      |  |



# Lateral positioning

## Pads/mattresses for lateral position

| Item no. | Description                                  | Colour | Size L x W x H<br>in mm |                                                                                      |
|----------|----------------------------------------------|--------|-------------------------|--------------------------------------------------------------------------------------|
| 248352   | Mattress lateral position,<br>two parts flat | Black  | 2000 x 540<br>x 120     |    |
| 248598   | Mattress lateral position,<br>two parts      | Black  | 2000 x 540<br>x 170/100 |    |
| Item no. | Description                                  | Colour | Size L x W x H<br>in mm |                                                                                      |
| 229739   | Pad lateral position<br>(universal)          | Blue   | 600 x 500<br>x 150      |   |
| 229087   | Pad lateral position,<br>children            | Pink   | 450 x 500<br>x 100      |  |

# Lateral positioning

## Pads/mattresses for lateral position

| Item no. | Description          | Colour | Size L x W x H<br>in mm |                                                                                   |
|----------|----------------------|--------|-------------------------|-----------------------------------------------------------------------------------|
| 249085   | Pad lateral position | Blue   | 550 x 500<br>x 200/100  |  |

## Tunnel pillow

| Item no. | Description             | Colour | Size L x W x H<br>in mm |                                                                                     |
|----------|-------------------------|--------|-------------------------|-------------------------------------------------------------------------------------|
| 229088   | Tunnel pillow, children | Pink   | 400 x 350<br>x 150      |    |
| 249084   | Tunnel pillow           | Blue   | 650 x 400<br>x 220      |  |
| 229101   | Tunnel pillow, big      | Blue   | 650 x 500<br>x 220      |  |

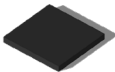
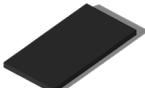
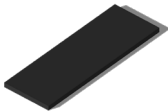
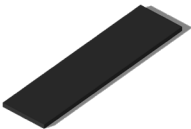
# Various pads for positioning

## Plane pads

| Item no. | Description        | Colour | Size L x W x H<br>in mm |                                                                                      |
|----------|--------------------|--------|-------------------------|--------------------------------------------------------------------------------------|
| 249108   | Plane pad 22       | Black  | 220 x 170<br>x 20       |     |
| 249106   | Plane pad 35       | Black  | 350 x 300<br>x 20       |     |
| 249104   | Plane pad 40       | Black  | 400 x 250<br>x 20       |     |
| 249105   | Plane pad 50       | Black  | 500 x 300<br>x 20       |    |
| 249107   | Plane pad 50, high | Black  | 500 x 300<br>x 50       |  |

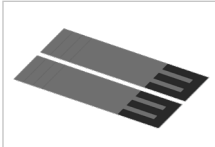
# Various pads for positioning

## Mattress toppers

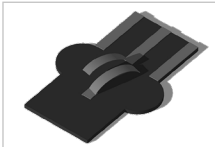
| Item no. | Description         | Colour | Size L x W x H<br>in mm |                                                                                    |
|----------|---------------------|--------|-------------------------|------------------------------------------------------------------------------------|
| 249139   | Mattress topper 50  | Black  | 500 x 520<br>x 50       |   |
| 249140   | Mattress topper 100 | Black  | 1000 x 520<br>x 50      |   |
| 249141   | Mattress topper 150 | Black  | 1500 x 520<br>x 50      |   |
| 249142   | Mattress topper 200 | Black  | 2000 x 520<br>x 50      |  |

# Various pads for positioning

## Pads & belts

| Item no. | Description                | Colour | Size L x W x H<br>in mm |                                                                                    |
|----------|----------------------------|--------|-------------------------|------------------------------------------------------------------------------------|
| 249100   | Belt for bariatric surgery | Grey   | 1520 x 425<br>x 5       |  |

## Pads for leg holders

| Item no. | Description               | Colour | Size L x W x H<br>in mm |                                                                                    |
|----------|---------------------------|--------|-------------------------|------------------------------------------------------------------------------------|
| 249102   | Pad for leg holder Goepel | Black  | 770 x 550<br>x 20       |  |

# Various pads for positioning

## Pads for arm holders

| Item no. | Description                          | Colour | Size L x W x H<br>in mm |                                                                                   |
|----------|--------------------------------------|--------|-------------------------|-----------------------------------------------------------------------------------|
| 248019   | Pad for Stockholm arm holder, curvet | Black  | 625 x 160 x 80          |  |
| 250015   | Pad for Stockholm arm holder, curvet | Blue   | 625 x 160 x 80          |  |
| 248059   | Pad for Stockholm arm holder, flat   | Black  | 625 x 180 x 70          |  |

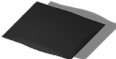
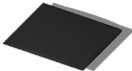
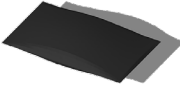
# Various pads for positioning

## Pads for different positionings

| Item no. | Description                          | Colour | Size L x W x H<br>in mm |                                                                                      |
|----------|--------------------------------------|--------|-------------------------|--------------------------------------------------------------------------------------|
| 249101   | Shoulder pad, L-shaped               | Black  | 165 x 180<br>x 150      |    |
| Item no. | Description                          | Colour | Size D x H<br>in mm     |                                                                                      |
| 249103   | Pad for counter traction<br>post 220 | Black  | 220 x 280               |    |
| Item no. | Description                          | Colour | Size L x W x H<br>in mm |                                                                                      |
| 248182   | Pad for washing support              | Black  | 230 x 230<br>x 230/160  |   |
| 229204   | Pad for washing support              | Black  | 200 x 310<br>x 300/250  |  |

# Various pads for positioning

## Granulat pads/multi positioning pads

| Item no. | Description               | Colour | Size L x W x H<br>in mm |                                                                                      |
|----------|---------------------------|--------|-------------------------|--------------------------------------------------------------------------------------|
| 248839   | Positioning pad, granulat | Black  | 350 x 300<br>x 70       |     |
| 248599   | Positioning pad, granulat | Black  | 460 x 400<br>x 50       |     |
| 248302   | Positioning pad, granulat | Black  | 480 x 480<br>x 90       |     |
| 248592   | Positioning pad, granulat | Black  | 500 x 300<br>x 90       |    |
| 248305   | Positioning pad, granulat | Black  | 750 x 400<br>x 100      |  |



# Documentation

## ISO 9001:2015 Quality Management System

The company behind ESSELL, Simonsen & Weel A/S, is certified according to ISO 9001:2015.



## ISO 14001:2015 Environment Management System

The company behind ESSELL, Simonsen & Weel A/S, is certified according to ISO 14001:2015.



## Oeko-Tex Standard 100

The OEKO-TEX® Standard 100 is an independent test and certification system for textile raw, intermediate and end products at all stages of processing. Our Decu-Tex cover fulfils this standard.

## Flammability (EN-597-1 & EN-597-2)

This standard lays down a test method to assess the ignitability of mattresses, upholstered bed bases or mattress pads when subjected to a smouldering ignition cigarette. All ESWELL products fulfil these standards.

## CE certification

All ESWELL products are designed and produced in compliance with Council Regulation 2017/745 concerning medical devices with later amendments.



## Biocompatibility (EN ISO 10993-5:2009)

The test is designed to determine the presence of leachable, toxic substances in materials and is carried out in accordance with BS EN ISO 10993-5. The result of the test was that our Decu-Tex cover is cytotoxic to those cells used under the conditions of the test.

## Water Penetration Resistance (BS 3424 part 26)

The test according BS 3424 part 26 determines the resistance of a material to penetration by water for a specified period of time and pressure sequence. A visual observation is made to determine when, or if, penetration occurs. Our Decu-Tex cover has been tested and has passed the test.

## Microclimate

This test evaluates the microclimatic ability of the mattress and cover to wick away and eliminate heat and moisture. The measuring of the micro-climatic ability of a product is very dependent on individual factors such as age, gender, nutritional state, and hormonal situation, but also on external factors such as temperature and humidity. Therefore, a very sensible standardization is necessary. Our products have been tested according to the thermal insulating effect (heat) and the moisture conducting properties (moisture).

Simonsen & Weel A/S is Denmark's oldest supplier of equipment to the Danish healthcare sector, with a history dating back to 1817.

We sell products from several of the world's leading manufacturers in areas such as surgical equipment, hospital and clinic equipment, medical technology, compression stockings, nutrition products and much more.

Today we have around 50 employees and most work from our head office just outside Copenhagen. The majority of our employees work as product specialists and consultants, covering the whole country including the Faroe Islands and Greenland.

In-house, we have a competent customer service department and a technical service department with specialists within each area.

It is Simonsen & Weel's philosophy that we only cooperate with leading manufacturers, thereby helping to strengthen our position as the Danish health sector's preferred partner.

**Simonsen & Weel A/S**

Vejleaavej 66  
DK-2635 Ishøj  
Denmark  
Tel.: +45 70 25 56 10  
Fax: +45 70 25 56 20  
E-mail: [eswell@sw.dk](mailto:eswell@sw.dk)  
[www.eswell.eu](http://www.eswell.eu)